

# PA500 Enterprise PDA



## User's Manual

400544G

Rev. C



## About This Manual

This manual explains how to install, operate and maintain the PA500 Enterprise PDA.

No part of this publication may be reproduced or used in any form, or by any electrical or mechanical means, without permission in writing from the manufacturer. This includes electronic or mechanical means, such as photocopying, recording, or information storage and retrieval systems. The material in this manual is subject to change without notice.

© Copyright 2007 unitech Electronics Co., Ltd. All rights reserved.

unitech global website address: <http://www.unitech-adc.com.tw>

Bluetooth is a registered trademark of Bluetooth SIG.



Microsoft, Windows and ActiveSync are either registered trademarks or trademarks of Microsoft Corporation. Other product names mentioned in this manual may be trademarks or registered trademarks of their respective companies and are hereby acknowledged.

## Battery Notices

---

This unit is equipped with a battery pack and backup battery. Both batteries will discharge after an extended period of not being used.

When both batteries are discharged, recharge the unit for 16 hours in order to fully charge the main battery and backup battery. There are two ways to recharge PA500:

1. Plug the USB charging cable to the PA500 and plug the 5V/2A AC-DC adapter to the power jack of the USB charging cable.
2. Place the PA500 into the docking station and plug the 5V/2A AC-DC adapter to the power jack of the docking station.

*For more details, refer to page 6, Charging the PA500.*

If the main battery is removed, the backup battery ensures the data on SDRAM is safe for up to 1 hour. To prevent data loss, do not leave the PA500 uncharged with the main battery removed for an extended period.

## Battery Charge Notice

It is important to consider the environment temperature whenever you are charging the Lithium-Ion battery pack. The process is most efficient at normal room temperature or slightly cooler. It is essential that you charge batteries within the stated range of 0°C to 50°C. Charging batteries out of the specified range could damage the batteries and shorten their charging life cycle.

---

## Storage and Safety Notice

Although charged Lithium-Ion batteries may be left unused for several months, their capacity may be depleted due to build up of internal resistance. If this happens, they will require recharging before they are used. Lithium-Ion batteries may be stored at temperatures between -20°C to 60°C, however they may be depleted more rapidly at the high end of this range. It is recommended to store batteries within the normal room temperature.

## RoHS Statement



This device conforms to RoHS (Reduction Of Hazardous Substances) European Union regulations that set maximum concentration limits on hazardous materials used in electrical and electronic equipment.

# Table of Contents

## Preface

About This Manual	iii
<b>Battery Notices</b>	iii
Battery Charge Notice	iii
Storage and Safety Notice	iv
RoHS Statement	iv

## Chapter 1

Getting Started	1
<b>Introducing the PA500</b>	1
Features	1
<b>Package Contents</b>	2
<b>A Tour of the PA500</b>	3
Front View	3
Back View	4
<b>Setting up the PA500</b>	5
Installing the Battery	5
Charging the PA500	6
Powering on the PA500	8

## Chapter 2

Using the Hardware	9
<b>Using the Keypad</b>	9
<b>Using the Stylus</b>	10
<b>Using the SDIO/MMC Slot</b>	11
<b>Using the Laser Scanner</b>	12
<b>Command Interface</b>	14
Today Screen	14
Start Menu	17
Navigation Bar	17
Command Bar	18
Pop-up Menus	19
Notifications	19

## Chapter 3

Getting Connected	21
<b>Establishing Device-PC Connection</b>	21
Installing Microsoft ActiveSync	21
Connecting the Device to Your Computer	22

<b>Using ActiveSync</b> .....	24
Synchronizing Information with Your Computer .....	24
Using ActiveSync to Exchange Files .....	26
Synchronization Options.....	27
<b>Chapter 4</b>	
Wireless Communications .....	28
<b>Managing Wireless Connections</b> .....	28
Using the Wireless Manager.....	28
<b>Connectivity Features</b> .....	29
Beam Function.....	29
Infrared Connection .....	30
Bluetooth Connection .....	30
Wi-Fi Connection .....	34
<b>Connecting to the Internet</b> .....	35
<b>Chapter 5</b>	
Managing Programs .....	36
<b>Accessing Programs</b> .....	36
<b>Using the Barcode Scanner Programs</b> .....	37
Scan2Key .....	37
Scanner Settings .....	38
<b>Chapter 6</b>	
Customizing Your PA500 .....	41
<b>Adjusting Settings</b> .....	41
<b>Checking Main and Backup Battery Status</b> .....	42
<b>Extending Battery Life</b> .....	43
<b>Adjusting the Backlight Setting</b> .....	44
<b>Resetting the Device</b> .....	45
Warm Boot.....	45
Clean Boot.....	45
Cold Boot.....	46
<b>Viewing Flash ROM Files</b> .....	46
<b>Adding Programs to Your Device</b> .....	46
<b>Adding a Program to the Start Menu</b> .....	47
<b>Removing Programs</b> .....	50
<b>Appendix A</b>	
System Specifications .....	51
<b>Appendix B</b>	
Regulatory Compliance Statements .....	72

## Getting Started

### Introducing the PA500

---

Thank you for purchasing the PA500 Enterprise PDA. Your PA500 was designed for users who need a compact and durable portable computer for data collection and real time transactions.

#### Ultra-rugged Design

The unitech PA500 Enterprise PDA is a compact mobile computing device designed for maximum durability.

#### Easy to Use

The unit is equipped with a color display with touch screen, a five-way directional key, and six application keys. The PA500 supports integrated long range scanners for fast and accurate data collection. The device also supports infrared interface, bluetooth, and wireless communication capability for exchanging information in a computing communication system.

#### Features

##### Powerful system

- Microsoft Windows Mobile 5.0 operating system
- Intel PXA270 processor with speed of up to 520 MHz

##### System memory

- 64 MB SDRAM
- 64 MB Flash ROM

##### Display

- 3.5-inch QVGA LCD touch-sensitive screen
- 320 x 240 resolution

##### Barcode scanner

- Symbol SE950
- Hitachi HD6433657W barcode decoder

##### Expansion slot

- SDIO/MMC slot

##### Wireless connectivity

- 802.11b/g with diversity antenna
- Bluetooth
- Infrared port

##### Communication

- 802.11b/g
- Bluetooth
- Infrared
- USB Host & Client

##### Battery life

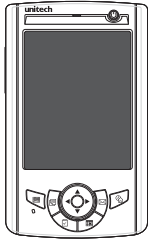
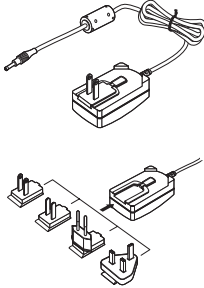
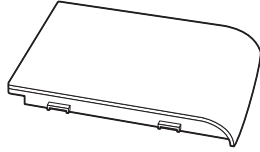
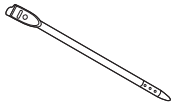

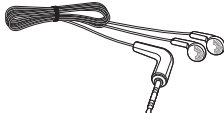
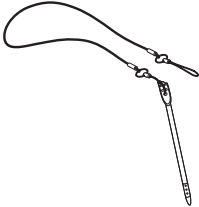
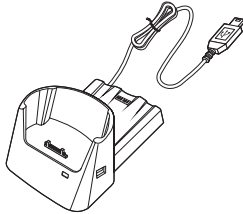
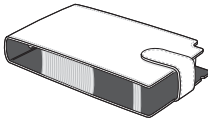
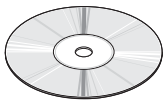
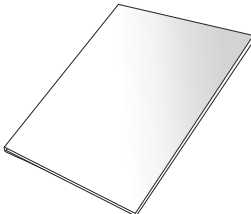
- RF enabled usage with 50% backlight: 4 hours
- Charging time: 3.5 hours
- Embedded backup battery cell

##### User-friendly interface

- Special keys to launch particular applications and display the on-screen keyboard
- Keys for barcode scanning

# Package Contents

After opening the box, ensure the following accessories for the PA500 are present:

		
<p><b>PA500 Terminal</b></p>	<p><b>Power Adapter*</b></p>	<p><b>Battery Pack</b></p>
		
<p><b>Stylus</b></p>	<p><b>USB charging cable</b></p>	<p><b>Earphone</b></p>
		
<p><b>Stylus with bungee lanyard (optional)</b></p>	<p><b>USB docking station (optional)</b></p>	<p><b>Leather case (optional)</b></p>
		
<p><b>CD-ROM</b></p>	<p><b>Quick Reference Guide</b></p>	

\* The adapter's replaceable clip plugs is available, depends on the region.

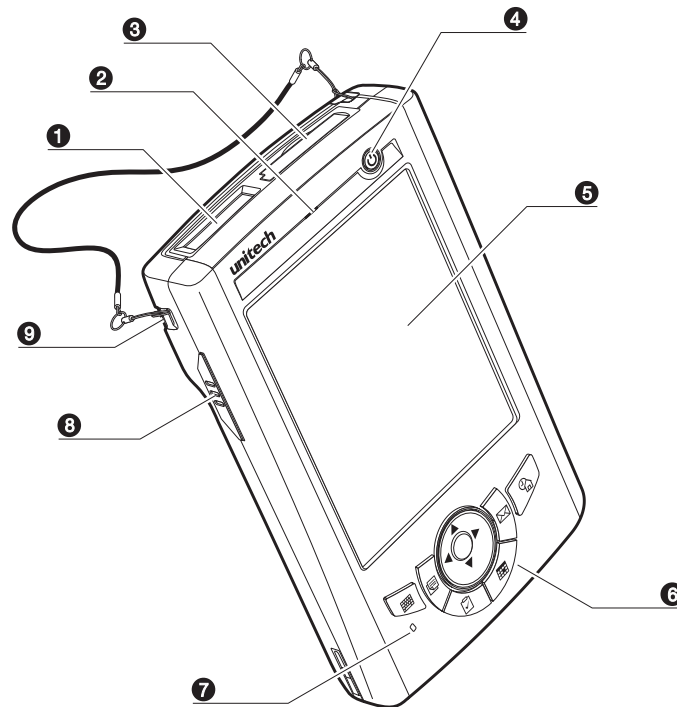
If anything is missing or appears damaged, contact your dealer.



## A Tour of the PA500

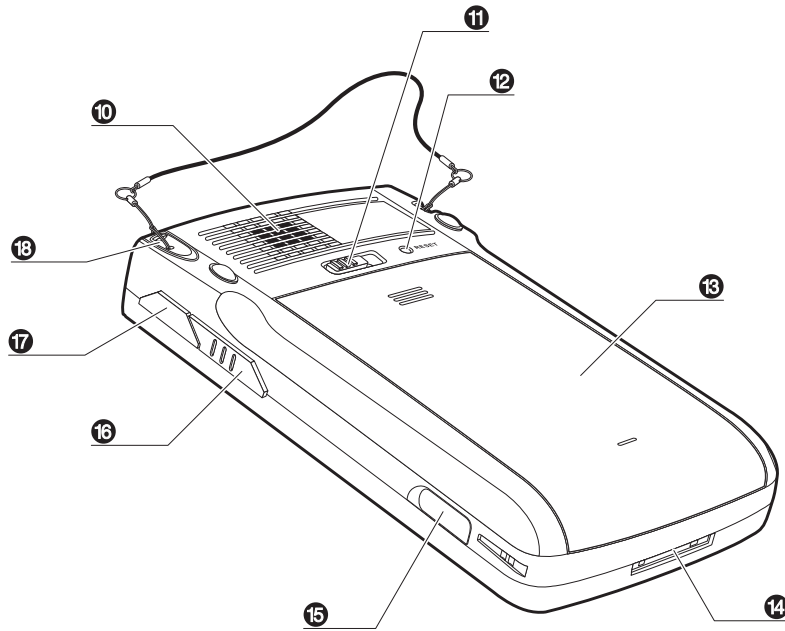
The following sections describe the main components and features of the PA500.

### Front View



No.	Component	Description
1.	Barcode laser scanner (optional)	Reads and captures information on a barcode label.
2.	Status indicator	Indicates the battery charging and barcode scanning status. <b>Green</b> - Battery is fully charged or barcode scanning process is completed without error. <b>Red</b> - Battery is charging, barcode scanner is fired/activated.
3.	SDIO/MMC slot	Accepts an SD (Secure Digital), MMC (Multimedia Card) or SDIO (Secure Digital Input Output) cards, allowing you to add more memory. Install add-on applications or use audio text files stored in it for use with internal applications. You can also use it to backup data from your device.
4.	Power button	If the device is off, press this button to turn it on. Alternatively, when the unit is on, this key must be pressed and held down for about two seconds in order to turn the device off.
5.	LCD touch screen	Displays the applications and data stored on your device. It is touch-sensitive and responds to the stylus or finger.
6.	Keypad	Includes a software keyboard button, navigation key and application buttons to launch Microsoft Outlook Mobile programs.
7.	Microphone	Inputs audio into your device when recording the voice notes.
8.	Left scanner trigger key	Press to activate the barcode laser scanner.
9.	Cord holder	Eyelet for holding the elastic bungee lanyard.

## Back View



No.	Component	Description
10.	Speaker	When speaker phone is active, sounds are emitted here.
11.	Battery release latch	Slide toward the right side of the device and hold firmly, then detach the battery from its bay.
12.	Reset button	Press the end of the stylus into the button to reset your device.
13.	Main battery	Removable and rechargeable 3.7 V, 2200 mAh battery pack.
14.	Universal connector	Connects your device to a USB charging/communication cable. This USB cable connects to the computer's USB port and accepts the 5V AC adapter to provide power to the PA500. The unit can simultaneously recharge and perform an ActiveSync operation. You can also use it to connect peripheral hardware, such as a docking station, to your device. This port can also support USB and RS232 hosting for devices such as a USB or RS232 scanner, keyboard, or USB memory key.
15.	Earphone jack	Lift the rubber cover from the earphone jack and connect an audio line-out device (earphone or headphone).
16.	Right scanner trigger key	Press to activate the barcode laser scanner.
17.	Infrared (IR) port	Uses infrared technology to transmit and receive data from other IR-enabled devices.
18.	Stylus	To use the stylus, remove it from its holder and hold it the same way as you hold a pen or pencil.

# Setting up the PA500

---

Perform the following set up tasks to begin using your device:

- Install the battery pack
- Charge your device
- Power on the PA500

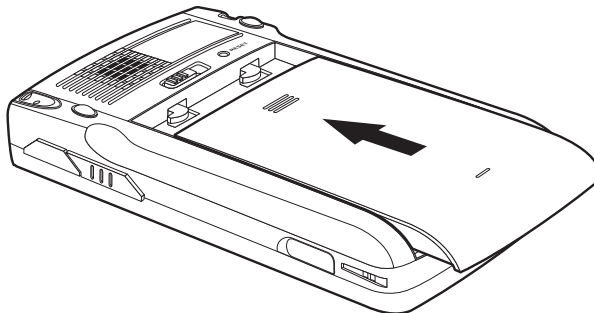
## Installing the Battery

**WARNING!** There is a risk of fire and burns if the battery pack is handled improperly. DO NOT disassemble, crush, puncture, short external contacts, or dispose the battery pack in fire or water. DO NOT attempt to open or service the battery pack. Dispose of used batteries according to the local recycling guidelines in your area.

A backup battery cell is embedded into your device to prevent data loss when the removable battery pack is removed or completely discharged. The backup battery will keep the data and system settings up to 1 hour if the main battery is removed.

**NOTE:** To enable the internal battery cell to provide backup power supply, charge your device with the main battery pack for at least three and a half hours.

1. Position the battery pack, making sure the battery pack fits the shape of the battery compartment.
2. Slide the battery pack into the battery bay. The battery pack locks to the chassis with an audible click.



3. If you remove the main battery and plug it back before the backup battery lost power, PA500 will be warm start.

4. If you remove the main battery and plug it back after the backup battery lost power, PA500 will be clean booted.

## Charging the PA500

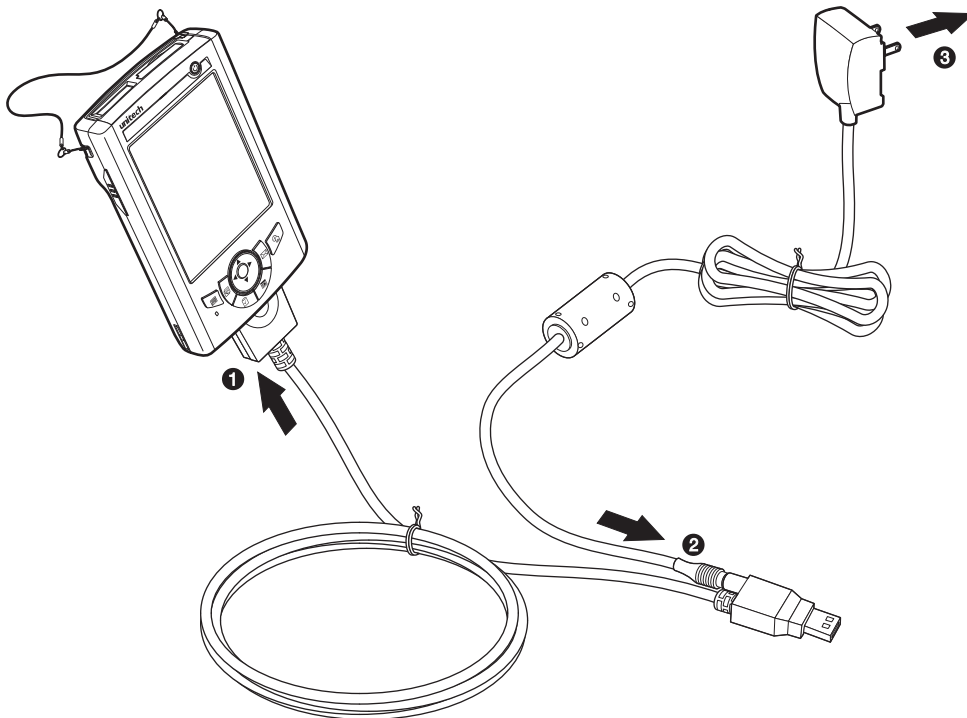
For initial use, you need to charge your device for about 16 hours. After that, you can charge it everyday to recharge the battery to full capacity. You can charge your device using the USB charging cable or the docking station.

**CAUTION!** Operating the PA500 for the first time without the AC adapter, and without fully charging the backup battery may result in loss of data stored in RAM memory.

**NOTE:** Data you entered may not be properly stored until the internal backup battery has been fully charged.

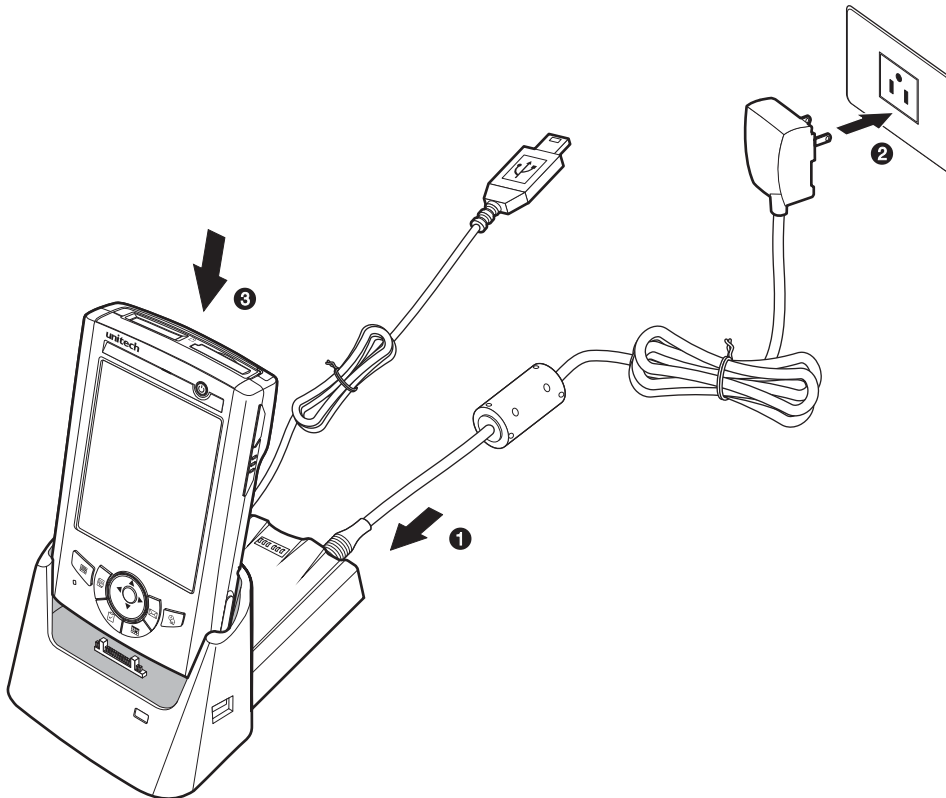
### *To charge the device using the USB charging cable:*

1. Attach the clip plug to the AC adapter, if necessary. Slide the replaceable clip plug into the AC adapter until it locks into place with an audible click.
2. Press and hold the connector button on the USB charging cable and connect it to the PA500 **(1)**.
3. Plug the AC adapter cable into the power jack on the USB charging cable **(2)**.
4. Connect the AC adapter into an electrical outlet **(3)**.





### To charge the device using the docking station:

1. Plug the AC adapter cable into the power jack on the docking station.
2. Plug the AC adapter into an electrical outlet.
3. Slide the device into the docking station until it clicks into place.




The connection is secure when the bottom edge of the device is aligned smoothly with the docking station, and the LED indicator on the docking station and device lights up red. LED status during charging:

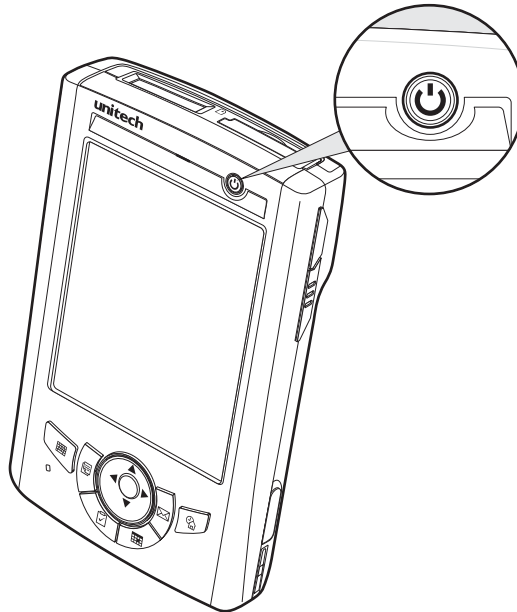
- Solid red: Charging
- Solid green: Charging complete

If the battery level becomes low, a status icon appears on the device screen indicating low  or very low battery  status. In both cases, perform an ActiveSync operation to back up your data, then recharge your device as soon as possible. If the battery level reaches a low status, the device will enter a sleep mode and cannot be powered up until the battery is charged. Windows Mobile 5.0 devices will retain installed applications and data when the main battery is completely drained for extended periods of time.

## Powering On the PA500

After you have initially charged your device for about 16 hours, the device is ready to be used. You can now start up your device where you can calibrate the screen, set up the system time zone, and learn some basic stylus usage.

1. Turn on your device by pressing the **Power** button  on the front panel.



**NOTE:** The PA500 screen ships with a protective plastic film. You may remove it by peeling from one corner. The screen will be more susceptible to scratching without the film, but will be more readable.

The unitech PA500 welcome screen appears. The Windows Mobile screen will appear shortly.

2. Calibrate the PA500

The calibrate screen will automatically appear when the unit is powered-on for the first time or after the system is reset. This screen can also be accessed at any time by tapping **Start** → **Settings** → **System** tab → **Screen**.

The PA500 will prompt you to calibrate the unit by tapping a sequence of screen locations. Tap gently but firmly. When you have completed the series of taps, press the **Enter** button to confirm it.

3. Set the Time Zone, Date, and Time

Select your current time zone from the Time zone drop-down menu, then tap **Next**.

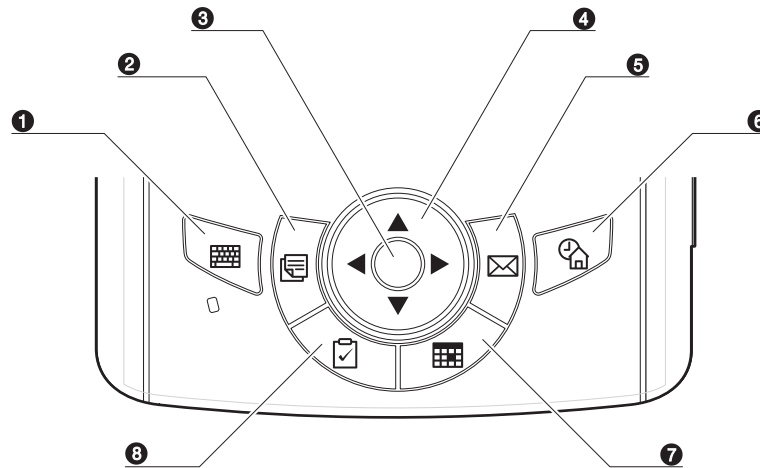
4. Follow all onscreen instructions to complete the set up. The setup wizard provides tips for using the pop-up menus and assign a lock password to access your device.

After the device setup, you can create an ActiveSync partnership to synchronize information between your computer and your device. See *Establishing Device-PC Connection* on page 21 for detailed instructions.

# Using the Hardware

## Using the Keypad

The PA500 keypad has a navigation key and six special keys to launch particular applications and display the on-screen keyboard.



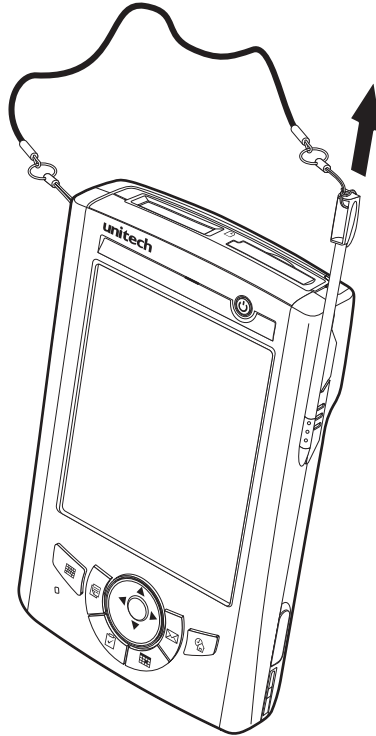
No.	Component	Icon	Description
1.	Software keyboard button		Press to launch the on-screen keyboard.
2.	Notes button		Press to open Notes. Notes allows you to quickly record information, reminders, ideas, drawings, and phone numbers. You can create a written note or include a recording in a note.
3.	Enter button		Press the Enter button, center of the navigation key, to access the menu options and confirm your selection.
4.	Navigation key		Use the up, down, left, and right arrow keys to navigate through the menu options.
5.	Email button		Launch Microsoft Outlook Express.
6.	Today button		Customize the layout and information that is displayed on the Today screen.
7.	Calendar button		Press to bring up Calendar. Calendar enables you to conveniently manage your schedules and appointments or any other activities associated with date and time.
8.	Tasks button		Keep track of what you have to do and prioritize them based on their severity and urgency.

## Using the Stylus

---

**CAUTION!** Never use anything other than PA500 stylus on the screen, otherwise this could cause a permanent damage.

1. Push the stylus in the direction of the arrow, then pull out to remove the stylus from its holder.




2. Hold the stylus like holding a pencil.
3. To make a choice from a menu, lightly tap the tip of the stylus on that choice.
4. To write data into a field on a form, use the stylus to print the letters or numbers(of on-screen keyboard). Use very light pressure.

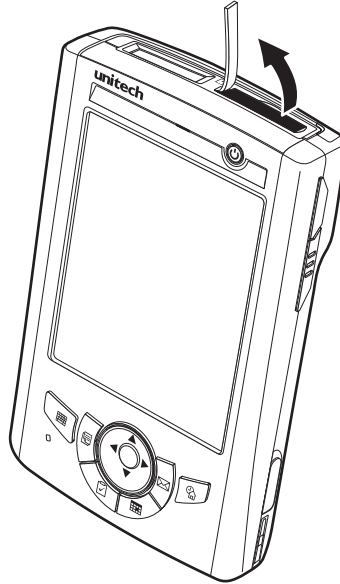


### Using the SDIO/MMC Slot

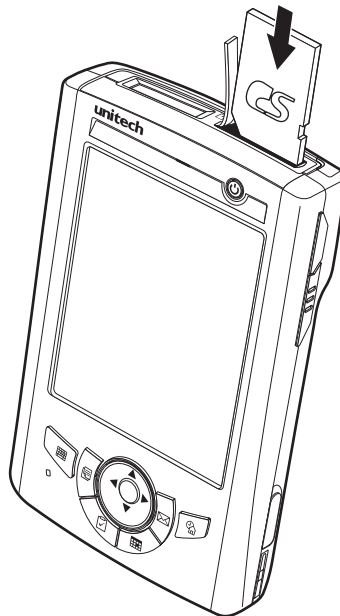
Your device has an expansion slot compatible with a range of SD, SDIO, and MMC storage cards, which are primarily used to back up or transfer files and data.

#### **To insert a storage card:**

1. Hold the device securely, then lift the rubber cover from the SDIO/MMC slot .



2. Push the card into the slot until you feel the SD card click into place, this will signal that the card is already properly seated in the slot.



The card is secure when it is not protruding from the slot.

#### **To remove a storage card:**

1. Hold the device securely. Push the card in and release. The card pops out.
2. Remove the card from the slot.

# Using the Laser Scanner

PA500 has an integrated laser scanner which reads all major barcode labels with excellent performance.

**NOTE:** The reading software must be enabled in order to operate the scanner. This can be a user-loaded application or a pre-loaded utility such as Scanner Settings or Scan2Key.

## To scan a barcode:

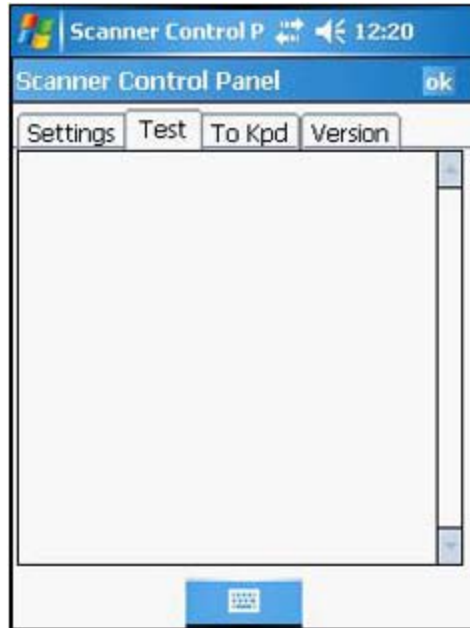
1. Launch the Scanner Settings application.
  - a. Tap **Start** → **Settings**.
  - b. On the System tab, tap **Scanner Settings**.

In the Scanner Control Panel screen, you can configure barcode scanner parameters such as enabling or disabling barcode symbologies, setting data transmission options, configuring magnetic and proximity reading options, and setting power management options.



- c. On the Settings tab, tap **Barcode IDs**.

- d. Tap the **Test** tab.



2. Press either one of the scanner trigger keys on the device.
3. Aim the laser scanner at the selected barcode and press both trigger keys to scan. The scanned barcode data appears on the screen.



4. On the Scanner Control Panel screen, tap **ok** to exit

# Command Interface

The following section explains the PA500 command interface.

## Today Screen

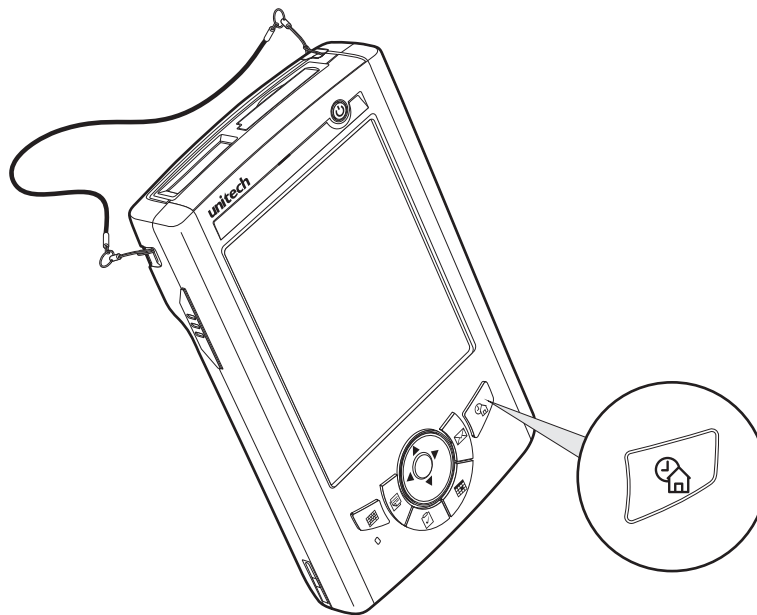
When you turn on your device for the first time each day or after a preset period of inactivity, you'll see the Today screen. It provides an at-a-glance view of the important reminders and details.



### **To display the Today screen:**

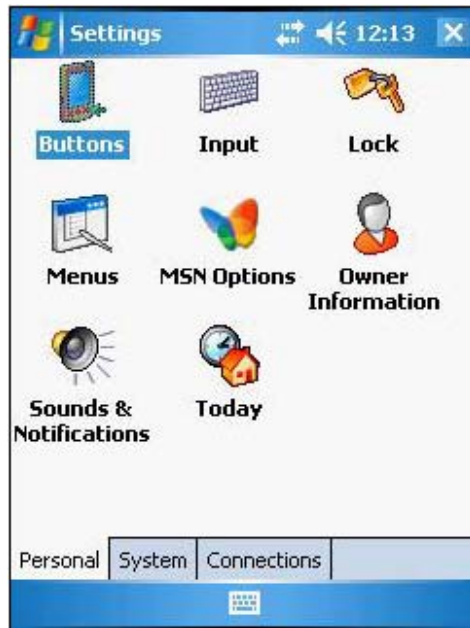
When viewing another screen, you can do either of the following:

- Tap **Start** → **Today**.
- Press the **Today** button on the device's front panel.



To define a preset period of inactivity after which the Today screen is displayed:

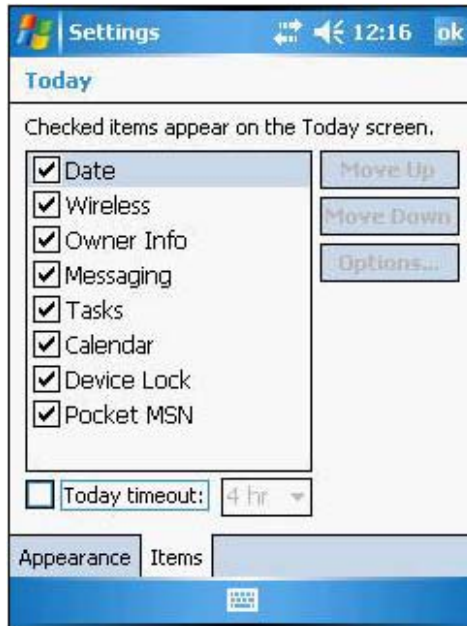
1. Tap **Start** → **Settings**.



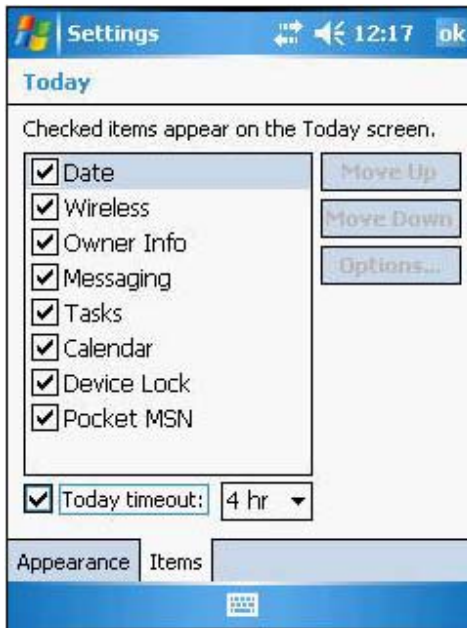
2. On the Personal tab, tap **Today**.



3. On the Items tab, select the “Today timeout” check box.



4. Select the timeout period beside the check box to set the period of inactivity.



5. Tap **ok**.

### Start Menu

The Start menu displays a list of active programs, as well as options to view the Programs, Settings and Help screens etc.



### Navigation Bar

The navigation bar is located at the top of the screen. It displays the notification icons for system alarms and reminders, status icons for the data connectivity, battery charge, and volume control.



### Status Icons

The table below describes some of the status icons you may see on your device.

Status Icon	Description
	Turns all sounds on and off.
	Indicates Bluetooth wireless technology is on.
	Indicates that the main battery is charging. The PA500 is either plugged-in via the AC adapter or docking station.
	Indicates the main battery is fully charged.
	Indicates the main battery is low and needs to be charged.
	Indicates the main battery is very low. Stop device operation and charge the device immediately.
	Indicates the backup battery is very low. Stop device operation and charge the device immediately.
	Indicates device is synchronized with a computer. Wireless and Bluetooth connection is activated.


For more detailed description of the status icons, tap **Start** → **Help**.

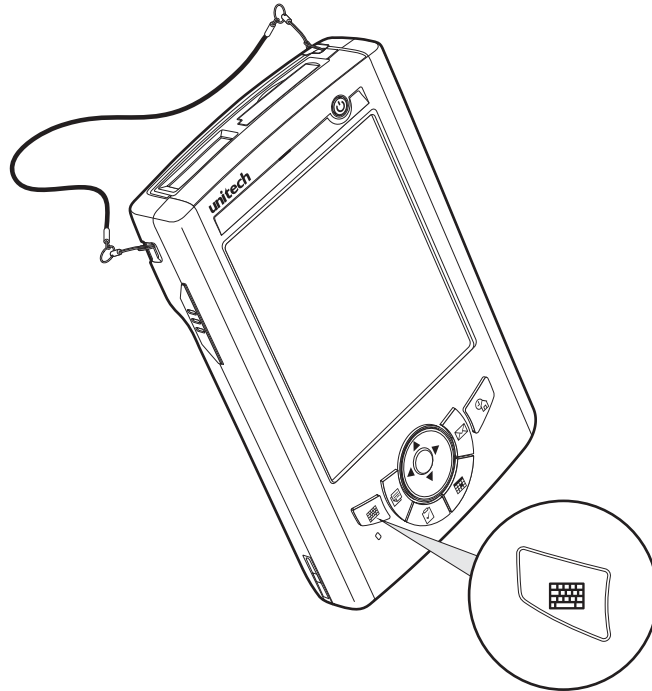
## Command Bar

Use the command bar at the bottom of the screen to perform tasks in programs.



The command bar includes menu names, buttons, and the Input Selector button.

- To create a new item in the current program, tap **New**.
- To view a notification or an image file received on your device, tap **View**.
- To see the name of a button, tap and hold the stylus on the button. Drag the stylus off the button so that the command is not carried out.
- To view the soft keyboard, tap the **Input Selector** button  or you can press the Software keyboard button.



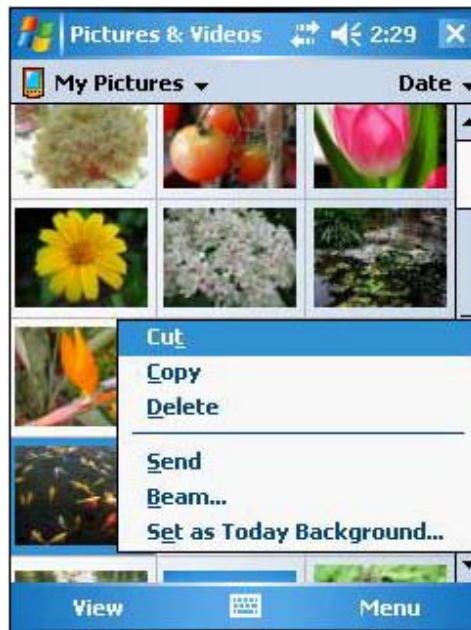


### Pop-up Menus

With pop-up menus, you can quickly choose an action for an item. The actions in the pop-up menus vary from program to program.

#### *To display a pop-up menu:*

1. Tap and hold the stylus on the item that you want to perform the action on.
2. When the menu appears, lift the stylus, then do either of the following:
  - Tap the action you want to perform.
  - Tap anywhere outside the menu to close the menu without performing an action.



### Notifications

Your device will remind you when you have something to do or receive a message.

For example, if you've set up an appointment in Calendar, a task with a due date in Tasks, data or message received, or an alarm in Clock; you'll be notified in any of the following ways:

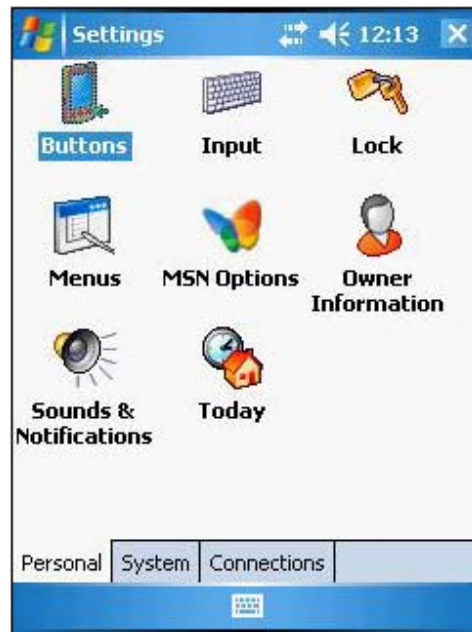
- A message box appears on the screen.



- A sound(which you can specify) is played.

## To choose reminder types and sounds for your device:

1. Tap **Start** → **Settings**.



2. On the Personal tab, tap **Sounds & Notifications**.
3. On the Sounds tab, select the kind of events you want to be notified of.
4. On the Notifications tab, select the manner of notification you prefer. The options you choose here are applied globally in your device.
5. Tap **ok**.

## Getting Connected

### Establishing Device-PC Connection

---

#### Installing Microsoft ActiveSync

In order to exchange data between your computer and the PA500, Microsoft ActiveSync must be installed on your computer. Use the USB charging cable that comes with your device or cradle to connect the device to your computer.

**NOTE:** The PA500 Enterprise PDA requires ActiveSync version 4.2 or higher.

#### *System installation requirements*

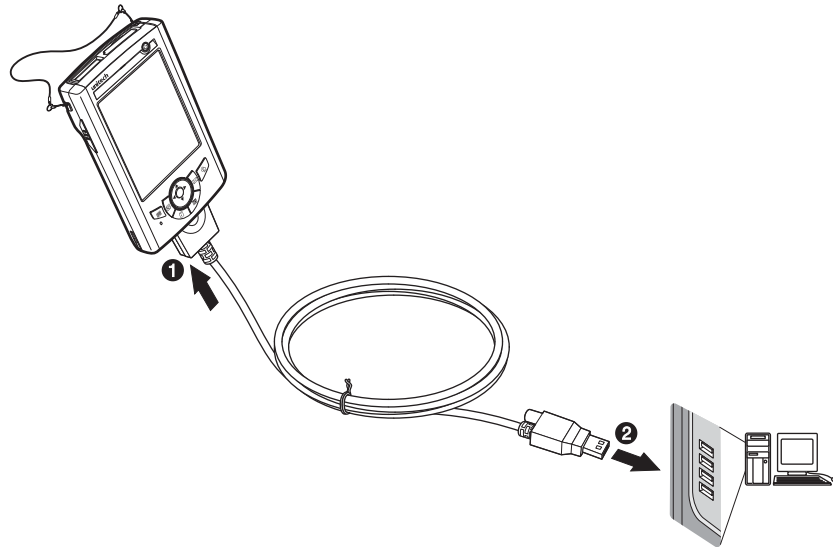
- Microsoft Windows 2000 SP4, Server<sup>®</sup> 2003 SP1, Server 2003 SP1 for titanium-based systems, Server 2003 Standard x64 Edition, XP<sup>®</sup> Media Center Edition, XP Professional x64 Edition, XP SP1, XP SP2, XP Tablet Edition
- Microsoft Outlook<sup>®</sup> 2000, Microsoft Outlook XP, or Microsoft Outlook<sup>®</sup> 2003 (recommended) messaging and collaboration clients required for Microsoft Outlook Office Mobile synchronization
- Microsoft Office 2000, Microsoft Office XP or Microsoft Office 2003 for Microsoft Office Mobile<sup>®</sup> synchronization
- Microsoft Internet Explorer 6.0 or later for Internet Explorer Mobile favorites synchronization
- Microsoft Systems Management Server 2.0
- Hard disk drive with 7 MB of available hard disk space (actual requirements may vary based on selected features and user's current system configuration)
- USB port, Bluetooth, or infrared connection

#### *To install Microsoft ActiveSync on your computer:*

1. Close any open programs, including those that run at startup, and disable any virus-scanning software.
2. Download the ActiveSync software from the Microsoft ActiveSync Download page at <http://www.microsoft.com>.
3. Browse to the location of the downloaded file, and double-click it.  
The installation wizard begins.
4. Follow the instructions on the screen to install Microsoft ActiveSync.  
After you have installed ActiveSync and restarted your computer, the ActiveSync icon will appear on your computer's system tray (on the lower right-hand corner of the screen) and the ActiveSync wizard appears.  
For detailed information on how to use ActiveSync on your computer, start ActiveSync, then click **Help** → **Microsoft ActiveSync Help**.

## Connecting the Device to Your Computer

1. After ActiveSync has been installed, connect the USB charging cable to your device. If necessary, connect an adapter.
2. Plug the other end of the USB charging cable into a USB port on your computer.




3. Turn the device on.
4. ActiveSync should start automatically and recognize your PA500 and configure the USB port. The New Partnership setup wizard will automatically start.

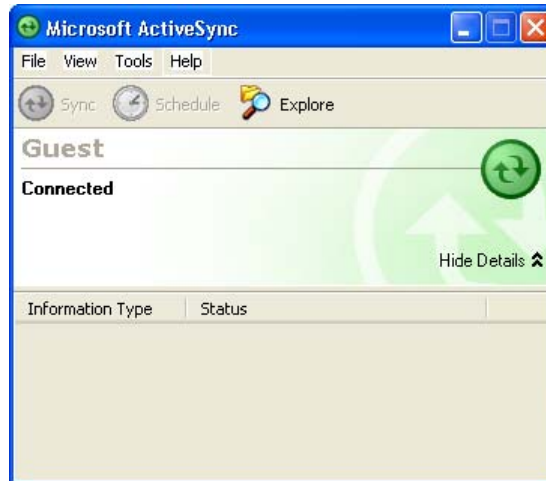


**NOTE:** If ActiveSync doesn't start automatically, click **Start** → **Programs** → **Microsoft ActiveSync**.

If a message appears indicating that it is unable to detect a connection, click the **Cancel** button and manually configure the communication settings.

5. Follow the onscreen instructions.

- When the configuration process is complete, the ActiveSync window appears on your computer, while the **Data connectivity** icon  appears on your device's navigation bar.



- Synchronization will be initialized and will take place if you have chosen to synchronize periodically or upon connection via several options — via USB charging cable, infraRed, or Bluetooth connections.

**NOTE:** Your computer can create a partnership with multiple Enterprise PDA. Also, the PA500 can create a partnership with up to two computers.

# Using ActiveSync

You can use ActiveSync to synchronize information between your PA500 and your computer so you always have the most up-to-date information wherever you are.

## Synchronizing Information with Your Computer

ActiveSync supports the following connection options between your device and your computer:

- USB connection - using the USB charging cable. This connection is established when you have created an ActiveSync partnership with your computer.
- Infrared connection - ideal for quickly switching between multiple devices since cables or adapters are not required.
- Bluetooth connection - applicable only if your computer is equipped with a Bluetooth adapter or access point.

### To setup a USB ActiveSync connection:

1. Open ActiveSync on your computer.
2. Click **File** → **Connection Settings**.
3. Select the “Allow USB connections” check box.
4. Click **OK**.
5. Open ActiveSync on your device.
6. Tap **Menu** → **Connections**.



7. Select the “Synchronize all PCs using this connection” check box.
8. Select **USB**.
9. Tap **ok**.
10. Connect your device to your computer using the USB charging cable. Synchronization is automatically initiated.

### To setup an Infrared ActiveSync connection:

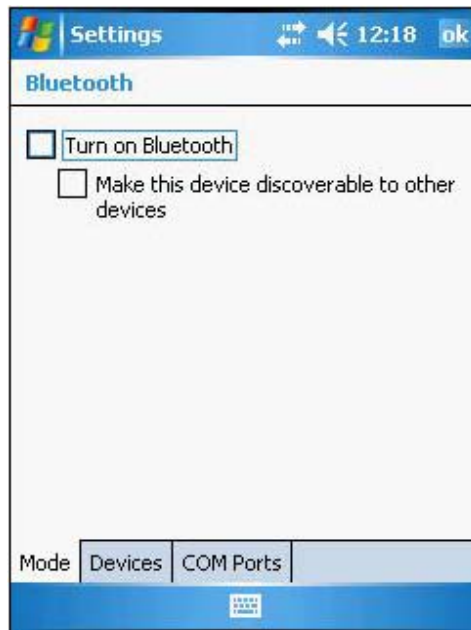
1. Configure the infrared port on your computer. Refer to the computer’s documentation for instructions.
2. Once your computer’s IR port is ready, open ActiveSync on your computer.
3. Click **File** → **Connection Settings**.
4. On the “Allow connections to one of the following” list, select Infrared Port (IR).
5. Click **OK**.

6. Align the IR port of your device with the IR port on your computer.
7. Open ActiveSync on your device.
8. Tap **Menu** → **Connect via IR**.

### **To setup a Bluetooth ActiveSync connection:**

Your device is equipped with Bluetooth wireless technology that you can use to synchronize information with a computer equipped with a Bluetooth adapter or access point. Bluetooth wireless technology allows you to communicate with the computer whenever it is within the range.

1. Configure the Bluetooth connection on your computer. Refer to the Windows Online Help for instructions.
2. Ensure Bluetooth is turned on your computer and detectable and within a close range.
3. Make your device detectable to your PC by tapping **Start** → **Settings** → **Connections** tab → **Bluetooth**.
4. On the Mode tab, select the check boxes for the “Turn on Bluetooth” and “Make this device discoverable to other devices” check box.



5. Tap **ok**.
6. On your device, tap **Start** → **Programs** → **ActiveSync**.
7. Tap **Menu** → **Connect via Bluetooth**.  
If authentication is required, the Enter Passcode screen appears, type an alphanumeric passkey (PIN code), then tap **Next**; enter the same passkey on the computer.  
If you do not want to use a passkey, tap **Next**.
8. Select service. Check “**Activesync**”. Tap “**Finish**”.
9. To preserve battery power, be sure to end the bluetooth activesync connection when synchronizing is complete. Tap “**OK**”.
10. From /start/Program, double tap “**Activesync**”.
11. Tap “Menu” at bottom right corner. Select “**Connect via Bluetooth**”.

Terminal connects to the PC via Bluetooth ActiveSync.



## Using ActiveSync to Exchange Files

You can use ActiveSync to exchange information from your device to your computer and vice versa. Changes you made to the information on one location will not affect the information on the other one. If you want to automatically update information on both your device and computer, synchronize the information instead.

You can copy two types of information to your device: files and Pocket Access Windows CE Store information.

The procedure below only applies to copying files. Refer to the ActiveSync Help on your computer for instructions on how to copy Pocket Access Windows CE Store information.

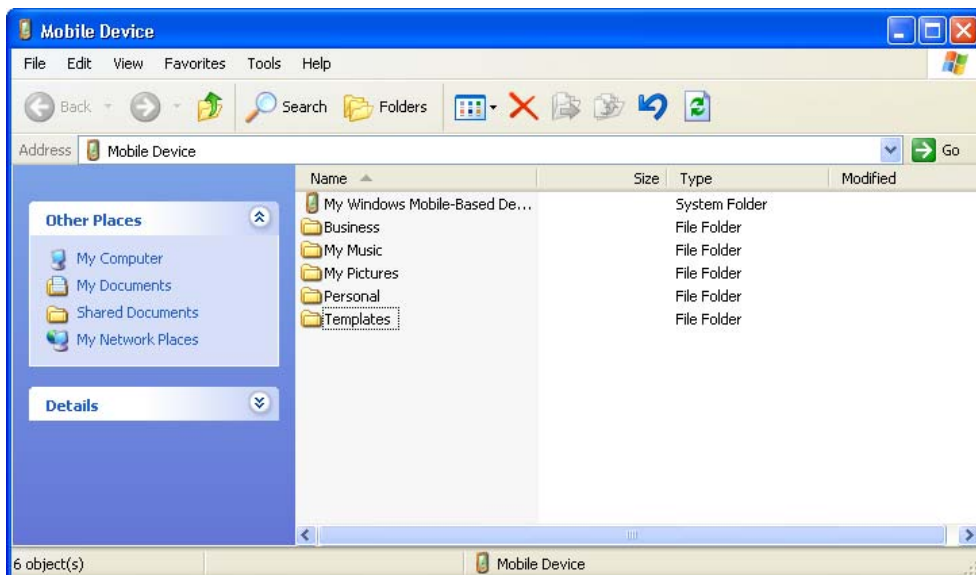
**NOTE:** Files created on your computer may need to be converted by ActiveSync so that they can be viewed and edited on your device and vice versa.

### To copy files:

1. Connect your device to your computer.
2. In ActiveSync on your computer, click **Explore**.



Windows Explorer opens the Mobile Device window for your device.



3. Locate the file that you want to copy on your device or computer.
4. Do either one of the following:
  - To copy the file to your device, right-click the file and click **Copy**. Place the cursor in the desired folder for your device, right-click, then click **Paste**.
  - To copy the file to your computer, right-click the file and click **Copy**. Place the cursor in the desired folder for your computer, right click, then click **Paste**.



### Synchronization Options

By default, ActiveSync only synchronize information for Contacts, Calendar, Messaging (Outlook E-Mail), Tasks, and Favorites (for Internet Explorer Mobile). You can select which information types are synchronized. You can also control how much information is synchronized. To illustrate, when synchronizing Calendar, you can set ActiveSync to synchronize appointments within a certain date range and for specific categories only. For example business appointments from the past two weeks only.

**NOTE:** ActiveSync does not support synchronizing subfolders in Calendar and Contacts.

#### *To select the type of information to synchronize:*

**NOTE:** If you decide to synchronize files, for example, Word documents, ActiveSync need to convert these files. Converted files may not contain all information found in the original file.

1. Connect your device to your computer.
2. Click **Tools** → **Options**.
3. Select the information type that you want to synchronize.
4. If available, click **Settings**, then select the options you want.
5. Repeat steps 2 and 3 for each information type.

## Wireless Communications

### Managing Wireless Connections

#### Using the Wireless Manager

The Wireless Manager provides easy management to the wireless features on your device. This program complements your device's integrated wireless card and enabling you to turn the wireless features on and off and allows for centralized management of the Wi-Fi and Bluetooth settings.


#### To open Wireless Manager:

Do any of the following:

- On the Today screen, tap **Wireless Manager**.

Tap to launch  
Wireless Manager.



- On the navigation bar, tap the **Data connectivity** icon , then tap **Wireless Manager** from the Connectivity drop-down box.
- Tap **Start** → **Settings** → **Connections** tab → **Wireless Manager**.

#### To activate wireless features

You can use Wireless Manager to turn the Wi-Fi and Bluetooth features on and off — one at a time or all at the same time.

- To turn multiple wireless features on, open Wireless Manager, then tap **All** → **Done**.
- To activate Bluetooth via the Wireless Manager, tap **Bluetooth** → **Done**.
- To activate Wi-Fi via the Wireless Manager, tap **Wi-Fi** → **Done**.

# Connectivity Features

You can use your device to exchange information with other mobile devices and connect to your computer, a network, or the Internet. You have the following options:

- Use the infrared sensor or Bluetooth function to exchange files from another IR- or Bluetooth-enabled device.
- Use Wi-Fi connection to send and receive email messages by using Messaging and view Web pages by using Internet Explorer Mobile.

## Beam Function

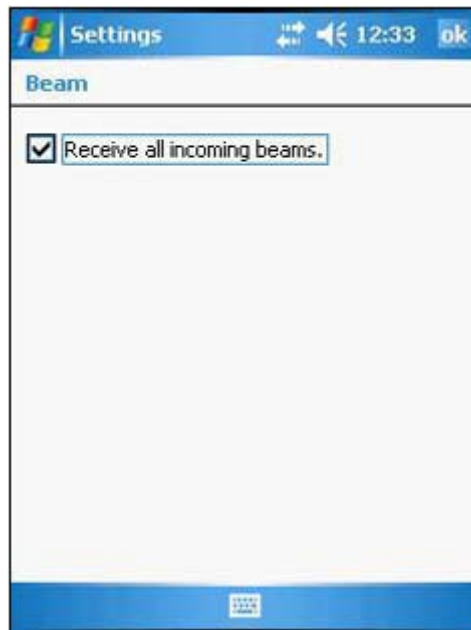
In a Microsoft Windows Mobile program (except Messaging) and Picture & Videos, you can exchange files using either infrared or Bluetooth.

**NOTE:** You can also beam files (not folders) from the File Explorer screen. To do so, tap and hold the item you want to send, then tap **Beam File** from the pop-up menu.

You need to first activate the beam function before you can begin exchanging files with another IR- or Bluetooth-enabled device.

### *To activate the Beam function:*

1. Tap **Start** → **Settings**.
2. On the Connections tab, tap **Beam**.
3. Tap “Receive all incoming beams” check box.



4. Tap **ok**.

## Infrared Connection

Using infrared, you can enable short-range file exchange between your device and another IR-enabled device.

### *To exchange files using IR connection:*

1. Ensure that the IR function on both your PA500 and on other device(which you want to exchange files with) are turned on.
2. Locate the item you want to send.
3. Align the IR port of your device with the IR port of the IR-enabled device, so that they are unobstructed and within a close range.
4. Tap and hold the item, then tap **Beam [type of item]** on the pop-up menu.
5. Tap the device that you want to send the file to.

### *To receive files via IR connection:*

1. Align the IR port of your device with the IR port of the IR-enabled device, so that they are unobstructed and within a close range.
2. Send the file from the other IR-enabled device.
3. On the Receiving Data callout, tap **Yes**.

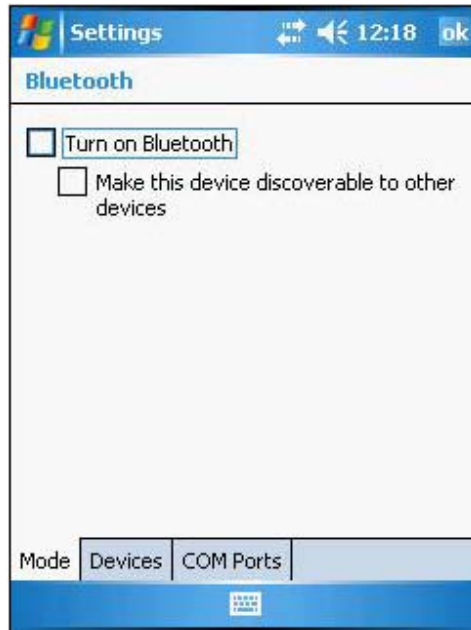
## Bluetooth Connection

Your device allows you to connect to any Bluetooth-enabled device in your personal area network (PAN). Once connected, you can send and receive files to another Bluetooth-enabled device, locate and use any of the services available on the Bluetooth-enabled device you are connected to.

### *To setup a Bluetooth connection:*

1. Activate the Bluetooth function.  
You have two options to activate your device's Bluetooth connection using the Wireless Manager or the Bluetooth option under the **Settings** → **Connections** preferences. Once activated, Bluetooth connection is indicated as "On" in the Wireless Manager section of the Today screen.
  - To activate Bluetooth via the Wireless Manager, see "Using the Wireless Manager" on page 28.
  - To activate Bluetooth using the Settings option:
    - a. Tap **Start** → **Settings**.
    - b. On the Connections tab, tap **Bluetooth**.

- c. On the Mode tab, select all check boxes.



2. Tap **ok**.

**NOTE:** Deactivate the Bluetooth function when you do not plan to use it for an extended time.

3. Create a Bluetooth partnership.

You need to create a Bluetooth partnership with another Bluetooth-enabled device in order to exchange the information.

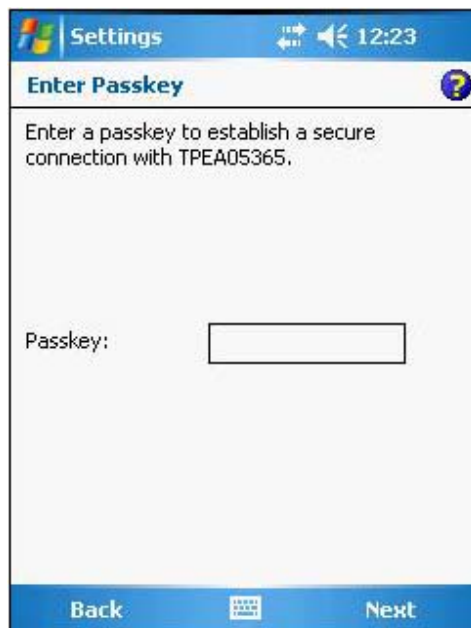
- a. On the Bluetooth settings screen, tap the **Devices** tab.



- b. Tap **New Partnership**. Your device search for Bluetooth-enabled devices on your PAN and displays them in the device's list.



- c. Tap the name of the device in the list, then tap **Next**.  
If you want to use a passcode, type an alphanumeric passkey, then tap **Next**; enter the same passkey on the other device.  
The passkey is recommended for enhanced security. Your passkey must be between 1 to 16 alphanumeric characters.  
If you do not want to use a passkey, tap **Next**.



- d. On the Partnership Settings screen, type in a device name and select the type of services you want to enable for the Bluetooth partnership.



- e. Tap **Finish**.
- f. On the Bluetooth screen, tap the **COM Ports** tab.
- g. To connect to a device, tap **New Outgoing Port**.
- h. To allow other devices to connect to your device, tap **New Incoming Port**.
- i. Select the device you want to add, then tap **Next**.
- j. Select a numbered COM port from the list.
- k. Select "Secure Connection" check box to designate the COM port for Bluetooth partnership.
- l. Tap **Finish**.
- m. Tap **ok**.

### ***To send files via Bluetooth:***

1. Locate the item you want to send.
2. Do any one of the following:
  - Tap and hold the item, and then tap **Beam Task** on the pop-up menu.
  - Using Pictures & Videos, tap and hold a thumbnail to display a pop-up menu of available actions, then tap **Beam**.
  - Using File Explorer, tap and hold an item (but not folders), select **Beam File** on the pop-up menu.
3. Select the Bluetooth device, then tap **Tap to send**.
4. Tap **ok**.

### ***To receive files via Bluetooth:***

1. Turn on the Bluetooth function.
2. Send the file from the other bluetooth device.
3. On the Bluetooth callout, tap **Yes**.  
For detailed information on how to use Bluetooth, tap **Start** → **Help**.

## Wi-Fi Connection

Windows Mobile can support TCP/IP protocol, so the user can easily connect to the Internet by modem or high-frequency wireless LAN technology. Wi-Fi networks look and operate similarly to Ethernet networks. The only difference is that a radio transmission replaces the hard-wire connection between the various nodes. This means all of your existing applications that currently operate over Ethernet will also function utilizing WLAN without any special wireless network software.

With PA500 integrated Wi-Fi, you can scan for existing wireless network access point or hot spot. Wireless network access point or hot spot can be found in homes and offices or public areas such as inside the airport, restaurant, coffee shops, hotels, subway stations, or campus. Using Wi-Fi networking, you can connect to a computer, access the Internet, send and receive email and files.

A wireless network can be added either when the network is detected or by manually entering settings information. Wi-Fi access in some areas may require a separate purchase of a service contract with a wireless service provider. You can check with a Wi-Fi service provider for detailed information.

**NOTE:** Before doing these steps, you must do the following:

- Make sure your computer have TCP/IP installed.
- Make sure the network system and remote access server in your workplace supports TCP/IP.
- Make sure you have remote access account. Ask your network administrator for assistance on setting up a wireless connection.

1. Tap the RF icon at the bottom of the screen.



2. A selection menu pop up.  
Select "Enable Wireless".



3. Once the RF card is detected, a dialog pop up.

4. Select a network SSID to connect to.  
Select one of the network. Tap "OK"

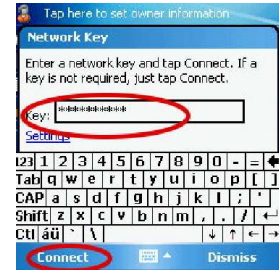




5. Select “The internet”. Tap “Connect”.



6. Enter the network key. Tap “Connect”.



7. Icon turn to double arrow, indicate that the RF connection is running.

8. If you do not need to use the RF connection, you can repeat step 1 ~2 and select “Disable Wireless”.



## Connecting to the Internet

After configuring your device’s wireless setting, you can now define the network settings you will be using to access the Internet, connect to your office network and view intranet URLs.

Once you have established these network settings, use Internet Explorer Mobile to view Internet and intranet sites.

## Managing Programs

### Accessing Programs

Your PA500 supports a variety of PDA and wireless communication programs to help you manage both personal and work-related information.

#### *To open a Program:*

- Tap a program name from the Start menu.



- Tap **Start** → **Programs**, then tap a program icon.  
You can select which programs are displayed on the Start menu. For instructions, see “Adding a Program to the Start Menu” on page 47.

## Using the Barcode Scanner Programs

### Scan2Key

The Scan2Key application routes input from a scanner port to a keypad buffer. Using Scan2Key, scanned data can be directly input into scanner port aware application, like Word Mobile.

#### To open Scan2Key:

1. Tap **Start** → **Programs**.



2. Tap **Scan2Key**. Scan2Key appears as an icon on lower right corner of the Today screen.



### To exit Scan2Key:

1. On the Today screen, tap and hold the Scan2Key icon, then tap **Exit** on the pop-up menu. The Quit Scan2Key dialog box appears.



2. Tap **Yes**.

## Scanner Settings

When it is necessary to change the default barcode symbology for a different application, the Scanner Control Panel provides the ability to change default symbology. The Scanner Control Panel also lets you place delimiter characters behind scanned data and save the settings.

### To view the default barcode symbologies:

1. Tap **Start** → **Settings**.
2. On the System tab, tap **Scanner Settings**.



### To view the default barcode symbologies:

1. Tap **Start** → **Settings**.
2. On the System tab, tap **Scanner Settings**.
3. On the Settings tab, tap the plus sign in front of Barcode Symbologies to expand and display the list of barcode symbologies.



Below table lists the standard protocol for a particular type of barcode symbology.

Symbology	Enable/Disable	Check Char/Digit verification	Transmit Check Char/Digit	Transmit Leading Char/Digit	Transmit Leading Digit	Other
Bookland EAN	YES	—	—	—	—	—
Codabar	YES	YES	YES	YES	—	CLSI format, 3 to 48 data length
Code 11	YES	—	YES	—	—	2 check digits, 1 to 48 data length
Code 128	YES	—	—	—	—	1 to 64 data length
Code 32 (Pharmacy Code)	YES	—	—	—	YES	Transmit trailing digit
Code 39	YES	YES	YES	YES	YES	Full ASCII, Function Code, 0 to 48 data length, Double labels decoding, Double labels separator
Code 93	YES	—	—	—	—	1 to 48 data length
Delta Code	YES	YES	YES	—	—	—
EAN 128	YES	—	—	—	—	Transmit Code ID, Field separator
EAN 13	YES	—	YES	—	YES	—
EAN 8	YES	—	YES	—	YES	—

<b>Symbology</b>	<b>Enable/Disable</b>	<b>Check Char/Digit verification</b>	<b>Transmit Check Char/Digit</b>	<b>Transmit Leading Digit</b>	<b>Transmit Leading Digit</b>	<b>Other</b>
Interleaved 2 of 5	YES	YES	YES	—	—	Fixed Length, Not suppress start or stop digit, 10 to 64 data length
Label Code IV&V	YES	—	YES	—	—	—
MSI/Plessey	YES	—	YES	—	—	Check digit double module 10, 1 to 16 data length
Standard 2 of 5/Toshiba (China Postal Code) Group	YES	YES	YES	—	—	Fixed Length, 4 to 48 data length
Telepen	YES	—	—	—	—	Standard character set
UPC A	YES	—	YES	—	YES	
UPC E	YES	—	YES	—	YES	Zero Expansion, NSC
UPC/EAN Group	—	—	—	—	—	Supplement 2, Supplement 5, Insert Space before supplement, Must have supplement, Add-on code try level

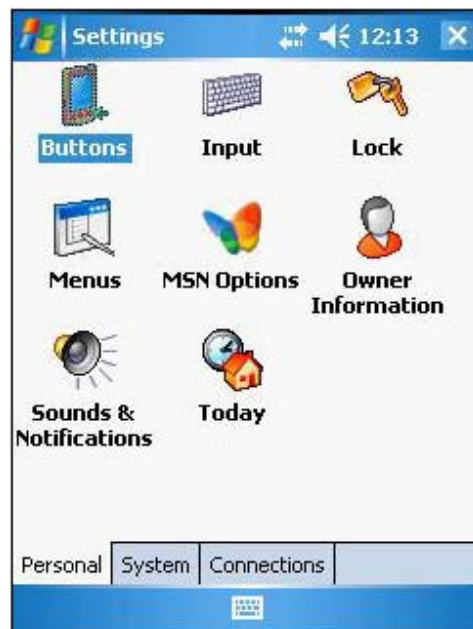
## Customizing Your PA500

### Adjusting Settings

You can adjust the settings of your device to fit the way you work. Certain settings, such as backlight, auto power off timer, system volume and processor speed can be adjusted.

**To access Settings:**

Tap **Start** → **Settings**.

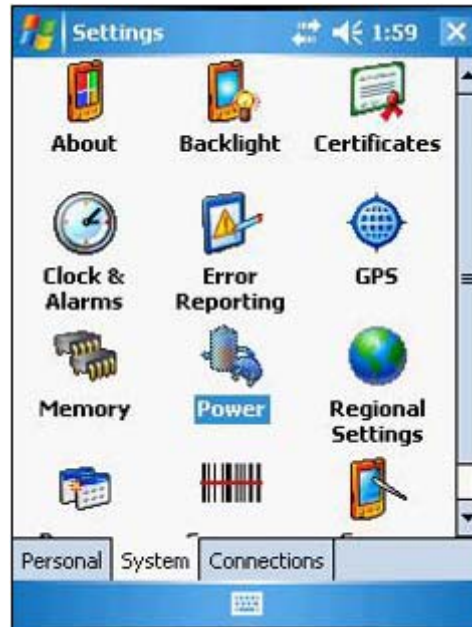




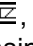

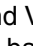
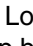
# Checking Main and Backup Battery Status

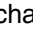
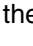
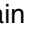
View power level for both the main and backup battery. To minimize power consumption, you can define settings for the auto-off function and the processor's operation speed.

## **To check the main and backup battery status:**

1. Tap **Start** → **Settings**.
2. On the System tab, tap **Power**.



3. Do either of the following:
  - If the Plug  or Battery  icon appears on your device, double-tap the icon to bring the Power settings screen.
  - Tap Start > Settings > System tab > Power.
4. The battery tab will show the status of the main and backup batteries. There are four kinds of status icons, Good , Low , and Very Low  or , that may appear on the top of the Today screen to indicate main battery or backup battery status. For more information on the battery status icons, see page 17.

**NOTE:** It is necessary to charge the main battery when the Low  is displayed. To prevent data loss, replace or recharge the device when the Very Low  or  status icons are displayed. If both icons are still displayed after charging, please contact unitech Technical Support.



## Extending Battery Life

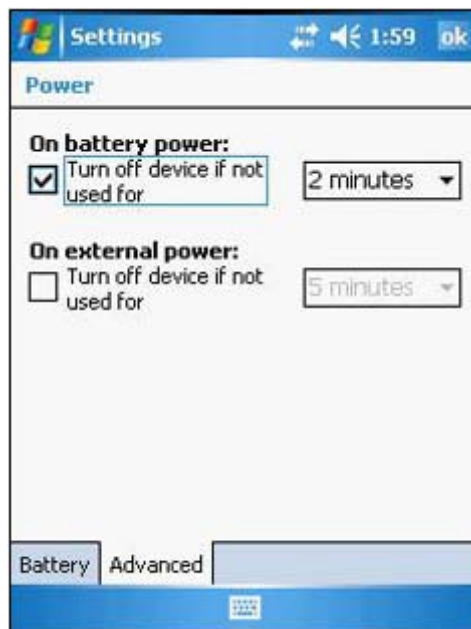
You can save your device's battery life by doing either of the following:

- Change the automatic power settings
- Minimize the use of backlight

### ***To change the Automatic Power Settings:***

The PA500 will enter idle mode when there is no task, or all tasks are waiting for input. In default setting, the PA500 will automatically turn itself off if it remains idle for 3 minutes and when there is no external charging power applied. Pressing the power button will return the PA500 to the same point at the time of automatic shutdown.

1. Tap **Start** → **Settings**.
2. On the System tab, tap **Power**.
3. Tap the **Advanced** tab.
4. Tap the “On battery power turn off device if not used for” check box and change the amount of time before the unit turns off the backlight while running in battery power mode.



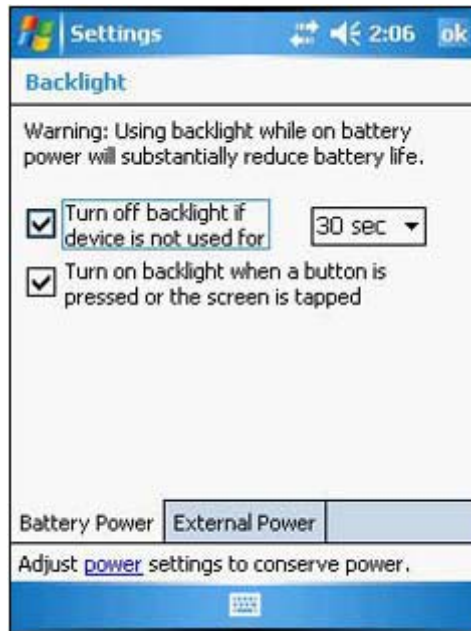
This function can also be activated when the PA500 is plugged into the power adapter or placed in its docking station. On the Advanced tab, tap the “On external power turn off device if not used for” check box and change the amount of time before the unit turns off the backlight while running in external power mode.

# Adjusting the Backlight Setting

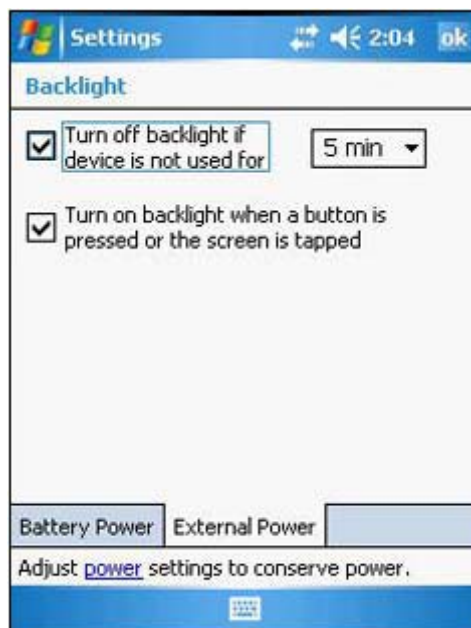
The power consumption of the LCD backlight is high, turn off the backlight function if it is not necessary.

## To adjust the Backlight setting:

1. Tap **Start** → **Settings**.
2. On the System tab, tap **Backlight**.
3. On the Battery Power tab, do either of the following:
  - Tap the “Turn off backlight if device is not used for” check box and change the amount of time before the unit turns off the backlight while running in battery power mode.
  - Tap “Turn on backlight when button is pressed or the screen is tapped” check box.



4. On the External Power tab, do either of the following:
  - Tap the “Turn off backlight if device is not used” check box and change the amount of time before the unit turns off the backlight while running in external power mode.
  - Tap the “Turn on backlight when a button is pressed or the screen is tapped” check box.



5. Tap **ok**.

# Resetting the Device

---

There are three kinds of reset that you can perform on your device when the device's operating system stops responding or the system becomes corrupted. Depending on the situation, a warm boot, clean boot, or cold boot can be performed.

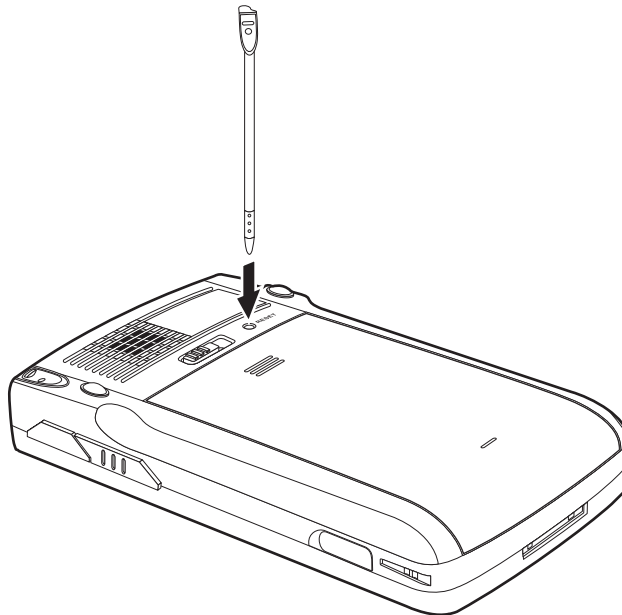
## Warm Boot

You may have to perform a warm boot if the device freezes (i.e., device no longer responds to the tapping on the screen).

### *To perform a warm boot:*

A warm boot or soft reset allows your device to get a fresh start, similar to rebooting a computer. This will restart your device and adjust memory allocation. All records and entries are retained after a warm boot. Unsaved data in open programs may in some cases be lost.

1. Remove the stylus from its holder.
2. Lightly press the tip of the stylus to the **Reset** button located on the rear of the device.



## Clean Boot

A clean boot allows your device will do a registry cleanup and reset all the system to the factory default.

### *To perform a clean boot:*

1. Hold down the right and left scanner trigger buttons.
2. While holding down the scanner trigger buttons, gently press the tip of the stylus to the reset button located on the rear of the device.

## Cold Boot

A cold boot will cut off power to your device. This will erase all records and entries, delete all programs you have added, and restore the device default factory settings. Never perform a cold boot unless a warm or clean boot does not correct your problem. When you perform your next ActiveSync operation, you can restore any data that you previously synchronized to your computer or you can restore data that you backed up to a storage card.

**NOTE:** When you perform a cold boot, the date and time settings are not retained. Formats, preferences, and other settings are restored to their default factory settings.

### *To perform a cold boot:*

1. Hold down the power button.
2. While holding down the power button, gently press the tip of the stylus to the reset button located on the rear of the device.

## Viewing Flash ROM Files

---

Flash ROM (read-only memory) is a rewritable storage for programs and data files. The benefit of this feature is that files and programs saved in Flash ROM are unaffected by the PA500 power status.

### **To access the Flash Memory files:**

1. Click My Device > Flash Storage

### **To transfer the files to the device's flash memory:**

1. Connect the device to your computer by ActiveSync.
2. On your computer's Activesync, click Mobile Device > Flash Storage.
3. Select the file that you want to transfer.
4. Drag the file from your terminal's flash storage folder to your computer's folder or drag the file from your computer's folder to the terminal's flash storage folder.

## Adding Programs to Your Device

---

Programs bundled with your device at the factory are stored in Flash ROM. You cannot remove these programs, and you'll never accidentally lose Flash ROM contents. Software programs and data files added to your PA500 after factory installation can be stored in RAM (random access memory).

### **To add programs using ActiveSync:**

Before installing a program on your device, you must first install the appropriate software to your device on your computer.

1. Determine your device and processor type so that you know which version of the software to install.
  - a. Tap **Start** → **Settings**.
  - b. On the System tab, tap **About**.
  - c. On the Version tab, make a note of the processor information.
2. Download the program to your computer (or insert the CD or disk that contains the program into your computer).

You may see a single \*.xip, \*.exe or \*.zip file, a Setup.exe file, or several versions of files for different device types and processors. Be sure to select the program designed for Pocket PC and your device's processor type.

**NOTE:** Read any installation instructions. Read Me files or documentation that come with the program. Many programs provide special installation instructions.

3. Connect your device to your computer.

4. Double-click the \*.exe file.
  - If the file is an installer, the installation wizard will begin. Follow the directions on the screen. Once the software has been installed on your computer, the installer will automatically transfer the software to your device.
  - If the file is not an installer, you will see an error message stating the program is valid but is designed for a different type of computer. You will need to move this file to your device. If you cannot find any installation instructions for the program in the Read Me file or documentation, use ActiveSync Explore button to copy the program file to the Program Files folder on your device. For more information on copying files using ActiveSync, see page 24.
5. Once installation is complete, tap **Start** → **Programs**, then the program icon to launch it. If you are installing a \*.cab file on your device, open ActiveSync on your desktop, then click the Explore button. The application will install on your device.

### **To add a program from the Internet:**

1. Determine your device and processor type so that you know which version of the software to install. Refer to previous section for instructions.
2. Download the program to your device straight from the Internet using Internet Explorer Mobile.

**NOTE:** Read any installation instructions. Read Me files or documentation that come with the program. Many programs provide special installation instructions.

3. Tap the file, such as \*.xip or \*.exe file. The installation wizard will begin.
4. Follow the onscreen instructions.

## Adding a Program to the Start Menu

---

You can choose what program icons should appear on the menu based on which ones you use most often.

### **To add a program to the Start menu program using Settings:**

1. Tap **Start** → **Settings**.
2. On the Personal tab, tap **Menus**.



3. Select the check box for the programs you wish to add. If you do not see the program you want, you can either use File Explorer on your device to move the program to the Start Menu folder, or use ActiveSync on your computer to create a shortcut to the program and place the shortcut in the Start Menu folder.
4. Tap **ok**.

**To add a program to the Start menu program using File Explorer on your device:**

1. Tap **Start** → **Programs** → **File Explorer**.
2. Tap the **My Device** icon (tap the folder list, labeled My Documents by default, and then My Device to see a list of all folders on your device).



3. Open the path: **Windows** | **Start** | **Programs**.



4. Tap and hold the program you want to add to the menu, then tap **Cut** on the pop-up menu.



5. Open the path: **Windows | Start Menu**.
6. Tap and hold a blank area of the screen, then tap **Paste** on the pop-up menu.





7. A Confirm File Move dialog box appears, tap **Yes**.



8. The program will now appear on the Start menu.

### ***To add a Start menu program using ActiveSync on your computer:***

1. In the ActiveSync on your computer, click **Explore** to explore your device's files and locate the program.
2. Right-click the program, and then click **Create Shortcut**.
3. Open the path: **Mobile Devices | Windows | Start Menu**.
4. Move the shortcut to the Start Menu folder. The shortcut now appears on the Start menu.

For more information on using ActiveSync, see ActiveSync Help on your computer.

## **Removing Programs**

---

You can only remove programs that you have installed. Programs that come with your device cannot be removed.

### ***To remove a program using Settings:***

1. Tap **Start** → **Settings**.
2. On the System tab, tap **Remove Programs**.
3. Tap the program you wish to remove.
4. Tap **Remove**.

### ***To remove a program using File Explorer on your device:***

If the program does not appear in the list of installed programs, use File Explorer on your device to locate the program:

1. Tap **Start** → **Programs** → **File Explorer**.
2. Tap the My Device icon (tap the folder list, labeled My Documents by default, and then My Device to see a list of all folders on your device).
3. Open the path: **Windows | Start | Programs**.
4. Tap and hold the program you want to remove, then tap **Delete** on the pop-up menu.



## System Specifications

Processing/Memory	CPU	Intel PXA270 processor with speed of up to 520 MHz
	Memory	<ul style="list-style-type: none"> <li>• SDRAM: 64 MB</li> <li>• Flash ROM: 64 MB Built-in (Flash Memory Manager included)</li> </ul>
Input/Output	Input Devices	<ul style="list-style-type: none"> <li>• Touch screen</li> <li>• Stylus</li> <li>• Control buttons</li> <li>• Full alphanumeric software keyboard</li> <li>• Mag stripe reader</li> <li>• Barcode scanner</li> </ul>
	Control and Quick launch hot keys	<ul style="list-style-type: none"> <li>• Navigation key</li> <li>• Software keyboard button</li> <li>• Email button</li> <li>• Today button</li> <li>• Calendar button</li> <li>• Tasks button</li> <li>• Notes button</li> </ul>
	Audio	<ul style="list-style-type: none"> <li>• Built-in speaker</li> <li>• 3.5 mm stereo earphone jack</li> <li>• Microphone</li> </ul>
	Display	<ul style="list-style-type: none"> <li>• 3.5" QVGA LCD touch-sensitive screen and Electroluminescent backlight</li> <li>• 320 x 240 resolution</li> </ul>
	LED Indicator	Dual colors (green/red) for barcode read indication
	Scan Engine	<ul style="list-style-type: none"> <li>• Light Source: Visible Laser Diode (VLD) 650 nm</li> <li>• Min. print contrast: 25% absolute dark/light reflectance at 650 nm</li> <li>• Power Consumption: 65 mA typical@5 V</li> </ul>
	Connectivity	<ul style="list-style-type: none"> <li>• USB port</li> <li>• SDIO/MMC slot</li> </ul>
	Wireless connectivity	<ul style="list-style-type: none"> <li>• Bluetooth Version: 1.1 and 1.2 with class 2 specification Peak output power: 2 ±2 dBm Frequency band: 2400-2483.5 MHz Operating channels: 79 Channels Modulation Type: GFSK</li> </ul>

Input/Output	Wireless connectivity	<ul style="list-style-type: none"> <li>• WLAN (802.11b) 802.11b low power (3.96 mW deep sleep mode) Peak output power: 18 ±2 dBm Frequency band: 2400-2483.5 MHz Operating channels: 11 Channels Modulation Type:     CCK (1Mbps)     DBPSK (2Mbps)     DQPSK (5.5/11Mbps)</li> <li>• WLAN (802.11g) 802.11g low power (3.96 mW deep sleep mode) Peak output power: 15 ±2 dBm Frequency band: 2400-2483.5 MHz Operating channels: 11 Channels Modulation Type: OFDM (6~54Mbps)</li> <li>• Serial infrared port</li> </ul>
Power	Main battery	Standard battery: 3.7 V, 2200 mAh
	Battery life	4 hours
	Battery charge	<ul style="list-style-type: none"> <li>• 3.5 hours with external AC adapter</li> <li>• 3.5 hours with docking station</li> </ul>
	Backup battery	One hour data retaining time when main battery is removed
	Power management	<ul style="list-style-type: none"> <li>• Provide all voltage outputs required in this device</li> <li>• Retain memory content more than 72 hours after automatic low battery shutdown</li> <li>• Provide 4 hours operating time with a standard battery. The activities in operating period are: <ul style="list-style-type: none"> <li>a. Scan one barcode.</li> <li>b. Send this barcode data to the host via wireless LAN.</li> <li>c. Repeat items 1 and 2 every 5 seconds.</li> </ul> </li> <li>• Provide 3-level battery status to show main battery capacity</li> <li>• Provide 3-level battery status to show back-up battery capacity</li> <li>• 3.5 hours charging time</li> <li>• 16 hours backup battery charging time</li> </ul>

Barcode/Symbology	Barcode Scanner	Symbol SE950
	Symbology	<ul style="list-style-type: none"> <li>• Bookland EAN</li> <li>• Codabar</li> <li>• Code 11</li> <li>• Code 128</li> <li>• Code 32 (Pharmacy Code)</li> <li>• Code 39</li> <li>• Code 93</li> <li>• Delta Code</li> <li>• EAN 128</li> <li>• EAN 13</li> <li>• EAN 8</li> <li>• Interleaved 2 of 5</li> <li>• Label Code IV &amp; V</li> <li>• MSI/Plessey</li> <li>• Standard 2 of 5/Toshiba (China Postal Code) group</li> <li>• Telpen</li> <li>• UPC A</li> <li>• UPC E</li> <li>• UPC/EAN group</li> </ul>
OS and Software Programming Tools	OS	Microsoft Windows Mobile 5.0
	Language Support	<ul style="list-style-type: none"> <li>• International English</li> <li>• Japanese</li> <li>• Simplified Chinese</li> <li>• Traditional Chinese</li> </ul>
Mechanical and Environmental	Dimensions	Length: 126 mm Width: 76 mm Depth: 23 mm
	Weight	220 g
	Temperature	Operating: 0° to 50°C Non-operating: -20° to 60°C
	Humidity	Operating/Non-operating: 5% to 95% RH
	Vibration	Operating/Non-operating: 2g, 10 - 500 Hz
	Shock	Operating: 10 g Non-operating: 15 g
	Drop	120 cm, without major damage

## Technische Daten des Systems

CPU/Speicher	CPU	Intel PXA270-Prozessor mit Frequenzen bis zu 520 MHz
	Speicher	<ul style="list-style-type: none"> <li>• SDRAM: 64 MB</li> <li>• Flash ROM: 64 MB integriert (inklusive Flash-Speicher-Manager)</li> </ul>
Eingang/Ausgang	Eingangsgeräte	<ul style="list-style-type: none"> <li>• Touchscreen</li> <li>• Stift</li> <li>• Kontrolltasten</li> <li>• Vollalphanumerische Software-Tastatur</li> <li>• Magnetstreifenleser</li> <li>• Barcode-Scanner</li> </ul>
	Kontroll- und Schnellstart-Hotkeys	<ul style="list-style-type: none"> <li>• Navigationstaste</li> <li>• Tasks-Taste</li> <li>• Software keyboard-Taste</li> <li>• Today-Taste</li> <li>• E-Mail-Taste</li> <li>• Calendar-Taste</li> <li>• Notes-Taste</li> </ul>
	Audio	<ul style="list-style-type: none"> <li>• Eingebauter Lautsprecher</li> <li>• Mikrofon</li> <li>• 3,5 mm Stereo-Ohrhorerbuchse</li> </ul>
	Display	<ul style="list-style-type: none"> <li>• Berührungsempfindlicher 3,5-Zoll-QVGA-LCD-Bildschirm und elektroluminiszierende Beleuchtung</li> <li>• 320 x 240 Auflösung</li> </ul>
	LED-Anzeige	Zwei Farben (grün/rot) für Barcode-Leseanzeige
	Scanmaschine	<ul style="list-style-type: none"> <li>• Lichtquelle: Sichtbare Laser-Diode (VLD) 650 nm</li> <li>• Min. Druckkontrast: 25% absolute Dunkelheit/ Lichtreflektion bei 650 nm</li> <li>• Leistungsaufnahme: 65 mA typisch @ 5 V</li> </ul>
	Anschlussfähigkeit	<ul style="list-style-type: none"> <li>• SB-Anschluss</li> <li>• SDIO/MMC-Steckplatz</li> </ul>
	Drahtlosanschluss	<ul style="list-style-type: none"> <li>• Bluetooth Version: 1.1 und 1.2 mit Spezifikation Klasse 2 Ausgangsleistung (Spitze): <math>-1 \pm 2</math> dBm Frequenzband: 2400-2483,5 MHz Betriebskanäle: 79 Kanäle Modulationstyp: GFSK</li> </ul>

Eingang/Ausgang	Drahtlosanschluss	<ul style="list-style-type: none"> <li>• WLAN (802.11b) 802.11b niedrige Leistung (3,96 mW Tiefschlafmodus) Ausgangsleistung (Spitze): 18 ±2 dBm Frequenzband: 2400-2483,5 MHz Betriebskanäle: 11 Kanäle Modulationstyp:     CCK (1Mbps)     DBPSK (2Mbps)     DQPSK (5.5/11Mbps)</li> <li>• WLAN (802.11g) 802.11g niedrige Leistung (3,96 mW Tiefschlafmodus) Ausgangsleistung (Spitze): 15 ±2 dBm Frequenzband: 2400-2483,5 MHz Betriebskanäle: 11 Kanäle Modulationstyp: OFDM (6~54 Mbit/s)</li> <li>• Serieller Infrarotanschluss</li> </ul>
Strom	Hauptakku	Standardakku: 3.7 V, 2200 mAh
	Akkunutzungszeit	4 Stunden
	Akkuladung	<ul style="list-style-type: none"> <li>• 3,5 Stunden mit externem Netzteil</li> <li>• 3,5 Stunden mit Dockingstation</li> </ul>
	Backup-Akku	Daten werden bei Entfernung des Hauptakkus eine Stunde lang beibehalten
	Energieverwaltung	<ul style="list-style-type: none"> <li>• Gibt alle Spannungen aus, die in diesem Terminal benötigt werden</li> <li>• Bewahrt den Speicherinhalt für mindestens 72 Stunden nach automatischem Ausschalten wegen schwachem Akku</li> <li>• 4 Stunden Betriebszeit mit einem Standardakku. Die Aktivitäten in der Betriebszeit sind: <ul style="list-style-type: none"> <li>a. Einen Barcode scannen.</li> <li>b. Diese Barcode-Daten über drahtloses LAN an den Host senden.</li> <li>c. Punkte 1 und 2 alle 5 Sekunden wiederholen.</li> </ul> </li> <li>• Zeigt die Kapazität des Hauptakkus anhand eines 3-Stufen-Akkustatus</li> <li>• Zeigt die Kapazität des Backup-Akkus anhand eines 3-Stufen-Akkustatus</li> <li>• 3,5 Stunden Ladezeit</li> <li>• 16 Stunden Ladezeit für Backup-Akku</li> </ul>

Barcode/ Symbologie	Barcode- Scanner	Symbol SE950
	Symbologie	<ul style="list-style-type: none"> <li>• Bookland EAN</li> <li>• Codabar</li> <li>• Code 11</li> <li>• Code 128</li> <li>• Code 32 (Pharmazie-Code)</li> <li>• Code 39</li> <li>• Code 93</li> <li>• Delta Code</li> <li>• EAN 128</li> <li>• EAN 13</li> <li>• EAN 8</li> <li>• Interleaved 2 von 5</li> <li>• Label Code IV &amp; V</li> <li>• MSI/Plessey</li> <li>• Standard 2 von 5/ Toshiba-Gruppe (China-Postcode)</li> <li>• Telpen</li> <li>• UPC A</li> <li>• UPC E</li> <li>• UPC/EAN-Gruppe</li> </ul>
Betriebssystem und Software- Programmierung werkzeuge	Betriebssystem	Microsoft Windows Mobile 5.0
	Unterstützte Sprachen	<ul style="list-style-type: none"> <li>• Englisch (international)</li> <li>• Japanisch</li> <li>• Vereinfachtes Chinesisch</li> <li>• Traditionelles Chinesisch</li> </ul>
Mechanik und Umgebung	Abmessungen	Länge: 126 mm Breite: 76 mm Tiefe: 23 mm
	Gewicht	220 g
	Temperatur	Eingeschaltet: 0° to 50°C Ausgeschaltet: -20° to 60°C
	Luftfeuchte	Ein-/Ausgeschaltet: 5% to 95% RH
	Erschütterung	Ein-/Ausgeschaltet: 2g, 10 - 500 Hz
	Stoß	Eingeschaltet: 10 g Ausgeschaltet: 15 g
	Fall	120 cm, ohne wesentliche Beschädigungen

## *Especificaciones del sistema*

CPU/memoria	CPU	Procesador Intel PXA270 con velocidad hasta 520 MHz
	Memoria	<ul style="list-style-type: none"> <li>• SDRAM: 64 MB</li> <li>• Flash ROM: 64 MB integrado (Administrador de memoria flash incluido)</li> </ul>
Entrada/salida	Dispositivos de entrada	<ul style="list-style-type: none"> <li>• Pantalla sensible al toque</li> <li>• Stylus</li> <li>• Botones de control</li> <li>• Teclado software alfanumerico completo</li> <li>• Lector de cinta mag</li> <li>• Escaner de codigos de barras</li> </ul>
	Teclas especiales de control y de lanzamiento rapido	<ul style="list-style-type: none"> <li>• Tecla de navegacion</li> <li>• Boton de Tasks</li> <li>• Boton de teclado software</li> <li>• Bouton Today</li> <li>• Boton de Email</li> <li>• Boton de Calendar</li> <li>• Boton de Notes</li> </ul>
	Sonido	<ul style="list-style-type: none"> <li>• Bocina integrada</li> <li>• Conector de audifono estereo de 3.5 mm</li> <li>• Microfono</li> </ul>
	Pantalla	<ul style="list-style-type: none"> <li>• 3.5" QVGA LCD touch-sensitive screen and Electro luminescent backlight</li> <li>• Resolucion 320 x 240</li> </ul>
	Indicador LED	Dos colores (verde/rojo) para indicar la lectura de codigos de barras
	Maquina escaner	<ul style="list-style-type: none"> <li>• Fuente de luz: diodo laser visible (VLD) 650 nm</li> <li>• Contraste de impresion min.: 25% oscuro absoluto/reflejo claro a 650 nm</li> <li>• Consumo de energia: 65 mA typical@5 V</li> </ul>
	Conectividad	<ul style="list-style-type: none"> <li>• Puerto USB</li> <li>• Ranura SDIO/MMC</li> </ul>
	Conectividad inalambrica	<ul style="list-style-type: none"> <li>• Bluetooth</li> </ul> <p>Version: 1.1 y 1.2 con especificacion clase 2                      Maxima produccion de corriente: 2 ±2 dBm                      Banda de frecuencia: 2400-2483.5 MHz                      Canales operativos: 79 canales                      Tipo de modulacion: GFSK</p>

Entrada/salida	Conectividad inalámbrica	<ul style="list-style-type: none"> <li>• WLAN (802.11b) 802.11b de baja corriente (3.96 mW en modo dormir profundo) Maxima produccion de corriente: 18 ±2 dBm Banda de frecuencia: 2400-2483.5 MHz Canales operativos: 11 Channels Tipo de modulacion:     CCK (1Mbps)     DBPSK (2Mbps)     DQPSK (5.5/11Mbps)</li> <li>• WLAN (802.11g) 802.11g de baja corriente (3.96 mW en modo dormir profundo) Maxima produccion de corriente: 15 ±2 dBm Banda de frecuencia: 2400-2483.5 MHz Canales operativos: 11 canales Tipo de modulacion: OFDM (6~54Mbps)</li> <li>• Puerto serial infrarrojo</li> </ul>
Energia	Bateria principal	Bateria estandar: 3.7 V, 2200 mAh
	Duracion de carga de la bateria	4 horas
	Carga de bateria	<ul style="list-style-type: none"> <li>• 3.5 horas con adaptador de corriente AC externo</li> <li>• 3.5 horas con estacion de acoplamiento</li> </ul>
	Bateria de respaldo	Una hora de uso despues de retirar la bateria principal
	Administracion de energia	<ul style="list-style-type: none"> <li>• Proporciona todas las salidas de voltaje requeridas en esta terminal</li> <li>• Retiene el contenido de memoria por mas de 72 horas luego del apagado automatico por bajo nivel de bateria</li> <li>• Proporciona 4 horas de operacion usando un paquete de bateria estandar. Las actividades en el periodo de operacion son: <ul style="list-style-type: none"> <li>a. Escanea un codigo de barras.</li> <li>b. Envia el dato del codigo de barras al anfitrión a través del LAN inalámbrico.</li> <li>c. Repite artículos 1 y 2 cada 5 segundos.</li> </ul> </li> <li>• Proporciona 3 niveles de estado de bateria para mostrar la capacidad de la bateria principal</li> <li>• Proporciona 3 niveles de estado de bateria para mostrar la capacidad de la bateria de respaldo</li> <li>• 3.5 horas para recargar la bateria</li> <li>• 16 horas para recargar la bateria de respaldo</li> </ul>



Codigo de barras/ simbologia	Escaner de codigos de barras	Simbolo SE950
	Simbologia	<ul style="list-style-type: none"> <li>• Bookland EAN</li> <li>• Codabar</li> <li>•Codigo 11</li> <li>•Codigo 128</li> <li>•Codigo 32 (Codigo de farmacia)</li> <li>•Codigo 39</li> <li>•Codigo 93</li> <li>•Codigo Delta</li> <li>•EAN 128</li> <li>•EAN 13</li> <li>•EAN 8</li> <li>•Entrelazado 2 de 5</li> <li>•Codigo de etiqueta IV &amp; V</li> <li>•MSI/Plessey</li> <li>•Grupo estandar 2 de 5/ Toshiba (codigo postal chino)</li> <li>•Telpen</li> <li>•UPC A</li> <li>•UPC E</li> <li>•GroupeUPC/EAN</li> </ul>
Sistema operativo y herramientas de programacion software	Sistema operativo	Microsoft Windows Mobile 5.0
	Idioma soportado	<ul style="list-style-type: none"> <li>• Ingles internacional</li> <li>• Japones</li> <li>• Chino simplificado</li> <li>• Chino tradicional</li> </ul>
Mecanicas y del ambiente	Dimensiones	Largo: 126 mm Ancho: 76 mm Grosor: 23 mm
	Peso	220 g
	Temperatura	Operativa: 0° to 50°C No operativa: -20° to 60°C
	Humedad	Operativa/no operativa: 5% to 95% RH
	Vibracion	Operativa/no operativa: 2g, 10 - 500 Hz
	Choque	Operativa: 10 g No operativa: 15 g
	Caida	120 cm, sin mayor dano

## *Specifications du systeme*

Processeur/ Memoire	Processeur	Processeur Intel PXA270 avec frequence jusqu'a 520 MHz
	Memoire	<ul style="list-style-type: none"> <li>• SDRAM: 64 MB</li> <li>• ROM Flash: 64 Mo integre (gestionnaire de memoire Flash inclus)</li> </ul>
Entree/Sortie	Peripheriques d'entree	<ul style="list-style-type: none"> <li>• Ecran tactile</li> <li>• Stylet</li> <li>• Boutons de controle</li> <li>• Clavier logiciel alphanumerique complet</li> <li>• Lecteur de carte magnetique</li> <li>• Scanner de code barres</li> </ul>
	Touches speciales de lancement rapide et de controle	<ul style="list-style-type: none"> <li>• Touche de Navigation</li> <li>• Bouton Tasks</li> <li>• Bouton Software keyboard</li> <li>• Bouton Today</li> <li>• Bouton Email</li> <li>• Bouton Calendar</li> <li>• Bouton Notes</li> </ul>
	Audio	<ul style="list-style-type: none"> <li>• Haut-parleur integre</li> <li>• Prise ecouteur stereo 3,5 mm</li> <li>• Microphone</li> </ul>
	Affichage	<ul style="list-style-type: none"> <li>• Ecran tactile LCD QVGA de 3,5 pouces et retroéclairage electroluminescent</li> <li>• Resolution de 320 x 240</li> </ul>
	Voyant diode	Bicolore (vert/rouge) pour l'indication de lecture de code barres
	Moteur de numerisation	<ul style="list-style-type: none"> <li>• Source lumineuse : Diode a laser visible (VLD) 650 nm</li> <li>• Contraste d'impression mini : Reflectivite sombre/clair absolue 25% a 650 nm</li> <li>• Consommation : 65 mA typique a 5 V</li> </ul>
	Connectivite	<ul style="list-style-type: none"> <li>• Port USB</li> <li>• Emplacement SDIO/MMC</li> </ul>
	Connectivite sans fil	<ul style="list-style-type: none"> <li>• Bluetooth Version : 1.1 et 1.2 avec specification classe 2 Sortie d'alimentation de pointe : 2 ±2 dBm Bande de frequence : 2400-2483.5 MHz Canaux de fonctionnement : 79 Channels Type de modulation : GFSK</li> </ul>

Entree/Sortie	Connectivite sans fil	<ul style="list-style-type: none"> <li>• Reseau sans fil (802.11b) 802.11b basse puissance (3,96 mW mode de sommeil profond) Sortie d'alimentation de pointe : 18 ±2 dBm Bande de frequence : 2400-2483.5 MHz Canaux de fonctionnement : 11 canaux Type de modulation : CCK (1Mbps) DBPSK (2Mbps) DQPSK (5.5/11Mbps)</li> <li>• Reseau sans fil (802.11g) 802.11g basse puissance (3,96 mW mode de sommeil profond) Sortie d'alimentation de pointe : 15 ±2 dBm Bande de frequence : 2400-2483.5 MHz Canaux de fonctionnement : 11 canaux Type de modulation : OFDM (6~54Mbps)</li> <li>• Port infrarouge serie</li> </ul>
Alimentation	Batterie principale	Batterie standard : 3,7 V, 2200 mAh
	Autonomie de la batterie	4 heures
	Charge de la batterie	<ul style="list-style-type: none"> <li>• 3,5 heures avec adaptateur secteur externe</li> <li>• 3,5 heures avec station d'accueil</li> </ul>
	Batterie de secours	Temps de retention des donnees d'une heure lors du retrait de la batterie principale
	Gestion de l'alimentation	<ul style="list-style-type: none"> <li>• Fournir toutes les tensions necessaires dans cet appareil</li> <li>• Retenir le contenu de la memoire plus de 72 heures apres l'arret automatique pour batterie basse</li> <li>• Fournir 4 heures de temps de fonctionnement avec une batterie standard. Les activites en periode de fonctionnement sont :               <ol style="list-style-type: none"> <li>a. Numeriser un code barres.</li> <li>b. Envoyer ces donnees de code barres au hote via le reseau sans fil.</li> <li>c. Repeter les etapes 1 et 2 toutes les 5 secondes.</li> </ol> </li> <li>• Fournir l'etat a 3 niveaux de la batterie pour afficher la capacite de la batterie principale</li> <li>• Fournir l'etat a 3 niveaux de la batterie pour afficher la capacite de la batterie de secours</li> <li>• Temps de charge de 3,5 heures</li> <li>• Temps de charge de 16 heures de la batterie de secourse</li> </ul>

Code barres/ Symboles	Scanner de code barres	Symbol SE950
	Symboles	<ul style="list-style-type: none"> <li>• Bookland EAN</li> <li>• Codabar</li> <li>• Code 11</li> <li>• Code 128</li> <li>• Code 32 (Code Pharmacie)</li> <li>• Code 39</li> <li>• Code 93</li> <li>• Delta Code</li> <li>• EAN 128</li> <li>• EAN 13</li> <li>• EAN 8</li> <li>• 2 parmi 5 entrelaces</li> <li>• Code etiquette IV &amp; V</li> <li>• MSI/Plessy</li> <li>• 2 parmi 5 standard/ groupe Toshiba (Code postal chinois)</li> <li>• Telpen</li> <li>• UPC A</li> <li>• UPC E</li> <li>• GroupeUPC/EAN</li> </ul>
Systeme d'exploitation et outils de programmation logicielle	Systeme d'exploitation	Microsoft Windows Mobile 5.0
	Prise en charge linguistique	<ul style="list-style-type: none"> <li>• Anglais international</li> <li>• Japonais</li> <li>• Chinois simplifie</li> <li>• Chinois traditionnel</li> </ul>
Mecanique et environnement	Dimensions	Longueur : 126 mm Largeur : 76 mm Profondeur : 23 mm
	Poids	220 g
	Temperature	En marche : 0° to 50°C A l'arret : -20° to 60°C
	Humidite	En marche/A l'arret : 5% to 95% RH
	Vibration	En marche/A l'arret : 2g, 10 - 500 Hz
	Choc	En marche : 10 g A l'arret : 15 g
	Chute	120 cm, sans degat majeur

## 系统规格

CPU/ 内存	CPU	520MHz Intel.PXA270 处理器
	内存	<ul style="list-style-type: none"> <li>• SDRAM: 64 MB</li> <li>• Flash ROM: 6 闪存 ROM 64MB 内置闪存 (含闪存管理器)</li> </ul>
输入 / 输出	输入设备	<ul style="list-style-type: none"> <li>• 触屏</li> <li>• 记录笔</li> <li>• 控制按钮</li> <li>• 全字母数字软件键盘</li> <li>• 磁条阅读器</li> <li>• 条码扫描器</li> </ul>
	控制键与快捷键	<ul style="list-style-type: none"> <li>• 导航键</li> <li>• 任务键</li> <li>• 软件键盘键</li> <li>• 日志键</li> <li>• Email 键</li> <li>• 日历键</li> <li>• 记录键</li> </ul>
	音频	<ul style="list-style-type: none"> <li>• 内置扬声器</li> <li>• 3.5mm 立体声耳机插孔</li> <li>• 麦克风</li> </ul>
	显示屏	<ul style="list-style-type: none"> <li>• 3.5” QVGA LCD 触摸屏及背光灯</li> <li>• 分辨率: 320 × 240</li> </ul>
	LED 指示	双色 (绿 / 红) 条码阅读指示
	Scan Engine	<ul style="list-style-type: none"> <li>• 扫描引擎光源: 650nm 可视激光二极管 (VLD)</li> <li>• 最低印刷反差: 650mm 时, 25% 绝对暗 / 光折射</li> <li>• 功耗: 5V 时标准量为 65mA</li> </ul>
	连接性	<ul style="list-style-type: none"> <li>• USB 端口</li> <li>• SDIO/MMC 插槽</li> </ul>
	无线连接性	<ul style="list-style-type: none"> <li>• 蓝牙 型号: 1.1 和 1.2, 符合 2 级规范 峰值输出功率: 2 ±2 dBm 频带: 2400-2483.5 MHz 工作频道: 79 个频道 调制类型: GFSK</li> </ul>

输入 / 输出	无线连接性	<ul style="list-style-type: none"> <li>• 无线局域网 WLAN (802.11b) 802.11b 低功率 (3.96 mW 深度睡眠模式) 峰值输出功率: 18 ± 2 dBm 频带: 2400-2483.5 MHz 工作频道: 11 个频道 调制类型:     CCK (1Mbps)     DBPSK (2Mbps)     DQPSK (5.5/11Mbps)</li> <li>• 无线局域网 WLAN (802.11g) 802.11g 低功率 (3.96 mW 深度睡眠模式) 峰值输出功率: 15 ± 2 dBm 频带: 2400-2483.5 MHz 工作频道: 11 个频道 调制类型: OFDM (6~54Mbps)</li> <li>• 串行红外端口</li> </ul>
电源	主电池	标准电池: 3.7 V, 2200 mAh
	电池寿命	4 小时
	电池充电	<ul style="list-style-type: none"> <li>• 用外接 AC 适配器, 3.5 小时</li> <li>• 使用座充时, 3.5 小时</li> </ul>
	后备电池	当电池被取出时, 资料可保留一个小时
	电源管理	<ul style="list-style-type: none"> <li>• 提供该终端所需的所有电压输出</li> <li>• 在电池无电而自动关闭之后, 储存器的内容可保留 72 小时以上。</li> <li>• 采用标准电池, 可提供 4 小时操作时间。操作期间的活动包括以下各项: <ul style="list-style-type: none"> <li>a. 扫描一个条码。</li> <li>b. 通过无线 LAN 将该条码资料传送到主机。</li> <li>c. 每 5 秒重复步骤 1 和步骤 2。</li> </ul> </li> <li>• 提供 3 级电池状态, 以显示主电池电量。</li> <li>• 提供 3 级电池状态, 以显示后备电池电量。</li> <li>• 3.5 小时充电时间。</li> <li>• 16 小时后备电池充电时间。</li> </ul>

条码 / 符号	条码扫描器	Symbol SE950
	符号	<ul style="list-style-type: none"> <li>• Bookland EAN 码</li> <li>• Codabar 码</li> <li>• 11 码</li> <li>• 128 码</li> <li>• 32 码 (Pharmacy 码)</li> <li>• 39 码</li> <li>• 93 码</li> <li>• Delta 码</li> <li>• EAN 128 码</li> <li>• EAN 13 码</li> <li>• EAN 8 码</li> <li>• 隔行扫描 2/5</li> <li>• IV &amp; V 标号码</li> <li>• MSI/Plessy 码</li> <li>• 标准 2/5/ 东芝 ( 中国邮政区号 ) 组码</li> <li>• Telpen 码</li> <li>• UPC A 码</li> <li>• UPC E 码</li> <li>• UPC/EAN 组码</li> </ul>
操作系统与软件编程工具	操作系统	Microsoft Windows Mobile 5.0
	语言支持	<ul style="list-style-type: none"> <li>• 全球通用英文</li> <li>• 日文</li> <li>• 简体中文</li> <li>• 繁体中文</li> </ul>
机械与环境条件	尺寸	长: 126 mm 宽: 76 mm 高: 23 mm
	重量	220 g
	温度	工作: 0° to 50°C 非工作: -20° to 60°C
	湿度	工作 / 非工作: 5% to 95% RH
	振动	工作 / 非工作: 2g, 10 - 500 Hz
	冲击	工作: 10 g 非工作: 15 g
	跌落	120 cm, 无严重损坏

## 系統規格

CPU/ 記憶體	CPU	Intel PXA270 處理器，處理速度 520 MHz
	記憶體	<ul style="list-style-type: none"> <li>• SDRAM: 64 MB</li> <li>• 快閃記憶體 ROM: 64 MB，內建式（含快閃記憶體管理程式）</li> </ul>
輸入 / 輸出	輸入裝置	<ul style="list-style-type: none"> <li>• 觸控螢幕</li> <li>• 手寫筆</li> <li>• 控制鍵</li> <li>• 文字軟體鍵盤</li> <li>• 磁條閱讀器</li> <li>• 條碼掃描器</li> </ul>
	控制鍵與快捷鍵	<ul style="list-style-type: none"> <li>• 導航按鍵</li> <li>• 工作按鍵</li> <li>• 軟體鍵盤按鍵</li> <li>• 日誌按鍵</li> <li>• Email 按鍵</li> <li>• 日曆按鍵</li> <li>• 筆記按鍵</li> </ul>
	音頻	<ul style="list-style-type: none"> <li>• 內建式喇叭</li> <li>• 3.5 mm 立體聲耳機插孔</li> <li>• 麥克風</li> </ul>
	顯示幕	<ul style="list-style-type: none"> <li>• 3.5" QVGA LCD 觸控螢幕及電致發光背光燈</li> <li>• 320 x 240 解析度</li> </ul>
	LED 指示器	雙色（綠 / 紅）條碼閱讀指示
	掃描引擎	<ul style="list-style-type: none"> <li>• 光源：可視鐳射二極體（VLD）650nm</li> <li>• 最低印刷反差：650 nm 時，25% 絕對暗 / 光折射</li> <li>• 功耗：5V 時標準量為 65 mA</li> </ul>
	連接裝置	<ul style="list-style-type: none"> <li>• USB 埠</li> <li>• SDIO/MMC 插槽</li> </ul>
	無線連接裝置	<ul style="list-style-type: none"> <li>• 藍芽</li> </ul> <p style="margin-left: 20px;">版本：等級 2 規規 1.1 及 1.2            峰值輸出電源：2 ± 2 dBm            頻寬：2400-2483.5 MHz            作業頻道：79 頻道            調變型態：GFSK</p>



輸入 / 輸出	無線連接裝置	<ul style="list-style-type: none"> <li>• WLAN (802.11b) 802.11b 低電源 (3.96 mW 深度睡眠模式) 峰值輸出電源：18 ± 2 dBm 頻寬：2400-2483.5 MHz 作業頻道：11 頻道 調變型態：     CCK (1Mbps)     DBPSK (2Mbps)     DQPSK (5.5/11Mbps)</li> <li>• WLAN (802.11g) 802.11g 低電源 (3.96 mW 深度睡眠模式) 峰值輸出電源：15 ± 2 dBm 頻寬：2400-2483.5 MHz 作業頻道：11 頻道 調變型態：OFDM (6~54Mbps)</li> <li>• 串列紅外線埠</li> </ul>
電源	主電池	標準電池：3.7 V，2200 mAh
	電池使用時間	4 小時
	電池充電	<ul style="list-style-type: none"> <li>• 用外接 AC 配接器時，3.5 小時</li> <li>• 使用座充時，3.5 小時</li> </ul>
	後備電池	當主電池被取出時，資料可保留一個小時。
	電源管理	<ul style="list-style-type: none"> <li>• 提供該終端所需的所有電壓輸出。</li> <li>• 在電池無電而自動關機之後，可將記憶內容保留 72 小時。</li> <li>• 採用標準電池，可提供 4 小時操作時間。操作期間的活動包括以下各項： <ul style="list-style-type: none"> <li>a. 掃描一個條碼。</li> <li>b. 通過無線 LAN 將該條碼資料傳送到主機。</li> <li>c. 每 5 秒重複步驟 1 和步驟 2。</li> </ul> </li> <li>• 提供 3 級電池狀態，以顯示主電池容量。</li> <li>• 提供 3 級電池狀態，以顯示後備電池容量。</li> <li>• 3.5 小時充電時間。</li> <li>• 16 小時後備電池充電時間。</li> </ul>

條碼 / 符號體系	條碼掃描器	Symbol SE950
	符號體系	<ul style="list-style-type: none"> <li>• Bookland EAN 碼</li> <li>• Codabar 碼</li> <li>• 11 碼</li> <li>• 128 碼</li> <li>• 32 碼 (藥局碼)</li> <li>• 39 碼</li> <li>• 93 碼</li> <li>• Delta 碼</li> <li>• EAN 128 碼</li> <li>• EAN 13 碼</li> <li>• EAN 8 碼</li> <li>• 交叉 2 5 碼</li> <li>• IV &amp; V 標號碼</li> <li>• MSI/Plessey 碼</li> <li>• 交叉 2 5 碼 / 東芝 (中國郵遞區號) 組碼</li> <li>• Telpen 碼</li> <li>• UPC A 碼</li> <li>• UPC E 碼</li> <li>• UPC/EAN 組碼</li> </ul>
作業系統與軟體編程工具	作業系統	Microsoft Windows Mobile 5.0
	語言支援	<ul style="list-style-type: none"> <li>• 全球通用英文</li> <li>• 日文</li> <li>• 簡體中文</li> <li>• 繁體中文</li> </ul>
機械條件與環境條件	尺寸	長：126 mm 寬：76 mm 高：23 mm
	重量	220 g
	溫度	工作：0° to 50°C 非工作：-20° to 60°C
	濕度	工作 / 非工作：5% to 95% RH
	振動	工作 / 非工作：2g, 10 - 500 Hz
	衝擊	工作：10 g 非工作：15 g
	跌落	120 cm 無嚴重損壞

## システム・スペック

CPU/ メモリー	CPU	Intel PXA270 プロセッサ (520MHz)
	メモリー	<ul style="list-style-type: none"> <li>• SDRAM : 64 MB</li> <li>• フラッシュ ROM : 64MB 内蔵 (フラッシュメモリーマネージャー)</li> </ul>
インプット/アウトプット	インプットデバイス	<ul style="list-style-type: none"> <li>• タッチスクリーン</li> <li>• スタイラス</li> <li>• コントロールボタン</li> <li>• 英数字ソフトキーボード</li> <li>• マグストライプリーダー</li> <li>• バーコードスキャナー</li> </ul>
	コントロール・クイックキー	<ul style="list-style-type: none"> <li>• ナビゲーションキー</li> <li>• ソフトウェア・キーボードボタン</li> <li>• メールボタン</li> <li>• ノートボタン</li> <li>• タスクボタン</li> <li>• Today ボタン</li> <li>• カレンダーボタン</li> </ul>
	オーディオ	<ul style="list-style-type: none"> <li>• ビルトインスピーカー</li> <li>• 3.5mm ステレオヘッドホンジャック</li> <li>• マイク</li> </ul>
	ディスプレイ	<ul style="list-style-type: none"> <li>• 3.5" QVGA LCD タッチスクリーン、エレクトロルミネセントバックライト</li> <li>• 解像度 320*240</li> </ul>
	LED インジケータ	バーコード読取デュアル表 (緑・赤)
	スキャンエンジン	<ul style="list-style-type: none"> <li>• 光源 : 可視レーザーダイオード (VLD) 650 nm</li> <li>• 最小プリントコントラスト : 25%アブソリュートダーク/ライト (650 nm 時)</li> <li>• 消費電力 : 65 mA typical@5 V</li> </ul>
	接続	<ul style="list-style-type: none"> <li>• USB ポート</li> <li>• SDIO/MMC スロット</li> </ul>
	ワイヤレス接続	<ul style="list-style-type: none"> <li>• ブルートゥース</li> <li>バージョン : 1.1 および 1.2、クラス 2 仕様</li> <li>ピーク出力 : 2 ±2 dBm</li> <li>周波数帯 : 2400-2483.5 MHz</li> <li>作動チャンネル : 79 チャンネル</li> <li>変調タイプ : GFSK</li> </ul>

<p>インプット/アウト プット</p>	<p>ワイヤレス接続</p>	<ul style="list-style-type: none"> <li>• WLAN (802.11b) 802.11b 低電力 (3.96 mW ディープスリープモード) ピーク出力 : 18 ± 2 dBm 周波数帯 : 2400-2483.5 MHz 作動チャンネル : 11 チャンネル 変調タイプ :     CCK (1Mbps)     DBPSK (2Mbps)     DQPSK (5.5/11Mbps)</li> <li>• WLAN (802.11g) 802.11g 低電力 (3.96 mW ディープスリープモード) ピーク出力 : 15 ± 2 dBm 周波数帯 : 2400-2483.5 MHz 作動チャンネル : 11 チャンネル 変調タイプ : OFDM (6~54Mbps)</li> <li>• 連続赤外線ポート</li> </ul>
<p>電源</p>	<p>メインバッテ リー</p> <p>バッテリー持続 時間</p> <p>バッテリー充電</p> <p>バックアップ バッテリー</p> <p>パワーマネジメ ント</p>	<p>標準バッテリー 3.7 V, 2200 mAh</p> <p>4 時間</p> <ul style="list-style-type: none"> <li>• 外部 AC アダプター (3.5 時間)</li> <li>• ドッキングステーション (3.5 時間)</li> </ul> <p>メインバッテリー取外しの場合、1 時間以内のデータを保持</p> <ul style="list-style-type: none"> <li>• この端末で必要なすべての電圧出力を供給</li> <li>• メモリー内容を、自動シャットダウン後 72 時間保存</li> <li>• 標準バッテリーで 4 時間作動</li> </ul> <p>操作時の動作 :</p> <ol style="list-style-type: none"> <li>a. バーコードスキャン</li> <li>b. バーコードデータをワイヤレス LAN でホスト機に送信</li> <li>c. 5 秒ごとに 1 と 2 を繰り返す</li> </ol> <ul style="list-style-type: none"> <li>• メインバッテリー残量を 3 段階で表</li> <li>• バックアップバッテリー残量を 3 段階で表</li> <li>• 充電 3.5 時間</li> <li>• バックアップバッテリー充電 16 時間</li> </ul>

バーコード/コード	バーコード スキャナー	Symbol SE950
	コード	<ul style="list-style-type: none"> <li>• コーダバー</li> <li>• コード 11</li> <li>• コード 128</li> <li>• コード 32</li> <li>• (薬学コード)</li> <li>• コード 39</li> <li>• コード 93</li> <li>• デルタコード</li> <li>• EAN 128</li> <li>• EAN 13</li> <li>• EAN 8</li> <li>• インターリーブ 2、5</li> <li>• Label Code IV &amp; V</li> <li>• MSI/Plessey</li> <li>• Standard 2 of 5/ Toshiba (China Postal Code) group</li> <li>• Telpen</li> <li>• UPC A</li> <li>• UPC E</li> <li>• UPC/EAN グループ</li> </ul>
OS、ソフトプロ グラミングツール	OS	OS: Microsoft Windows Mobile 5.0
	言語サポート	<ul style="list-style-type: none"> <li>• 国際英語</li> <li>• 日本語</li> <li>• 簡体字中国語</li> <li>• 繁体字中国語</li> </ul>
機構 <sup>1</sup> 使用環境	寸法	長さ：126mm 幅：76mm 高さ：23 mm
	重量	220 g
	温度	作動時：0 – 50 °C 非作動時：-20 – 60 °C
	湿度	作動時 / 非作動時：相対湿度 5% – 95%
	振動	作動時 / 非作動時：2g, 10 – 500 Hz
	衝撃	作動時：10g 非作動時：15g
	落下	120cm 以下、大きなダメージ無き場合

## *Regulatory Compliance Statements*

### ***FCC Statement***

This is a FCC Part 15 Class B product. In a domestic environment this product may cause radio interference, in which case the user may be required to take adequate measures.

### ***Canadian Compliance Statement***

This Class B Digital apparatus meets all requirements of the Canadian Interference-Causing Equipment Regulations.

The device is certified to the requirements of RSS-139-1 for 2.4 GHz spread spectrum devices.

### ***European Conformity Statement***

Declaration of Conformity with Regard to the R&TTE 1999/5/EC and EMC89/336/ EEC directives.

### ***Laser Information***

The unitech PA500 series is certified in the U.S. to conform to the requirements of DHHS/CDRH 21CFR Subchapter J and to the requirements of IEC 825-1. Class II and Class 2 products are not considered to be hazardous. The PA500 series contains internally a Visible Laser Diode (VLD) whose emissions do not exceed the maximum limits as set forth in the above regulations. The scanner is designed so that there is no human access to harmful laser light during normal operation, user maintenance or during prescribed service operations. The laser safety warning label required by the DHHS/IEC for the PA500 series's optional laser scanner module is located on the memory compartment cover, on the back of the unit.

**CAUTION!** Use of controls or adjustments or performance of procedures other than those specified herein may result in hazardous laser light. Use of optical instruments with the scanner will increase eye hazard. Optical instruments include binoculars, microscopes, and magnifying glasses. This does not include eye glasses worn by the user.

# Erklärung zur Übereinstimmung mit

### **FCC-Erklärung**

Die ist ein mit FCC, Teil 15, übereinstimmendes Produkt der Klasse B. In einer Wohnumgebung könnte dieses Produkt den Funkverkehr stören, wobei der Benutzer dann entsprechende Gegenmaßnahmen treffen muss.

### **Erklärung zur Übereinstimmung mit Vorschriften Kanadas**

Dieses Digitalgerät der Klasse B entspricht sämtlichen Anforderungen der kanadischen Bestimmungen für störfelder-erzeugende Geräte.

Das Gerät besitzt die Zertifizierung für RSS-139-1-Anforderungen für 2,4 GHz Spread-Spectrum-Geräte.

### **Erklärung zur Übereinstimmung mit Vorschriften Europas**

Erklärung zur Übereinstimmung mit den Richtlinien R&TTE 1999/5/EG und EMV 89/336/EWG.

### **Laser-Information**

Die unitech PA500-Serie ist in den USA für Übereinstimmung mit den Anforderungen von DHHS/CDRH 21CFR, Unterkapitel J, und den Anforderungen von IEC 825-1 zertifiziert. Produkte der Klasse II und Klasse 2 werden nicht als gefährlich angesehen. Die PA500-Serie besitzt intern eine sichtbare Laserdiode (VLD), deren Strahlung nicht die maximalen Grenzwerte, die in den obigen Bestimmungen festgelegt sind, überschreitet. Der Scanner ist so ausgelegt, dass bei normalem Betrieb, während Wartungsarbeiten seitens des Benutzers oder bei festgesetzten Reparaturen kein menschlicher Zugang zum gefährlichen Laserlicht erforderlich ist. Das von der DHHS/IEC für das optionale Laserscannermodul der PA500-Serie geforderte Warnschild für Lasersicherheit befindet sich auf der Abdeckung des Speicherfachs auf der Rückseite des Geräts.

**ACHTUNG** – Die Bedienung von Kontrolltasten oder Einstellungen oder Ausführung von Vorgängen, die von den hier beschriebenen abweichen, können eine gefährliche Laserbestrahlung zur Folge haben. Die Verwendung optischer Instrumente mit dem Scanner erhöht die Gefahr für Ihr Augenlicht. Optische Instrumente beziehen sich auf Ferngläser, Mikroskope und Lupen. Vom Benutzer getragene Brillen sind hiervon nicht betroffen.

# *Declaracion regulatoria*

## ***Declaracion de la FCC***

Este es un producto de la clase B de la parte 15 de la Comision Federal de Comunicaciones (FCC). Este producto puede causar interferencias radiales en un entorno domestico. En tal caso el usuario debera tomar medidas correctivas adecuadas.

## ***Declaracion de conformidad con regulaciones canadienses***

Este aparato digital de la clase B satisface todos los requisitos de las regulaciones canadienses acerca de las interferencias causadas por equipos.

Este dispositivo esta certificado de acuerdo a los requisitos RSS-139-1 para dispositivos con un rango espectral de 2.4 GHz.

## ***Declaracion de conformidad con regulaciones europeas***

Declaracion de conformidad con respecto a las directivas R&TTE 1999/5/EC y EMC 89/336/ EEC.

## ***Informacion laser***

La computadora unitech de la serie PA500 esta certificada en los Estados Unidos por los requisitos del subcapitulo J de DHHS/CDRH 21CFR y IEC 825-1. Los productos de la Clase II y Clase 2 no son considerados peligrosos. La serie PA500 contiene un diodo laser visible (VLD) con emisiones que no exceden los limites establecidos por las regulaciones citadas. El escaner esta disenado para impedir el acceso humano a la luz laser danina durante su operacion normal, mantenimiento o reparacion. La etiqueta de advertencia de seguridad laser DHHS/IEC para el modulo escaner laser opcional de la serie PA500 se encuentra en el compartimiento de memoria del panel trasero de la computadora.

**ADVERTENCIA:** El uso de controles, ajustes o procedimientos de rendimiento que no hayan sido especificados en este documento pueden resultar en una luz laser danina. El uso de instrumentos opticos con el escaner incrementaran el riesgo de posibles danos oculares. Tales instrumentos opticos pueden ser binoculares, microscopios, y lupas. No se incluyen las gafas portadas por los usuarios.



# Déclaration de conformité réglementaire

### **Déclaration FCC**

Ceci est un produit FCC article 15 classe B Dans un environnement domestique ce produit peut être à l'origine d'interférence radio, auquel cas l'utilisateur peut avoir l'obligation de prendre des mesures adéquates.

### **Déclaration de conformité du Canada**

Cet appareil numérique de la classe B respecte les exigences du Règlement sur le matériel brouilleur du Canada.

L'appareil est certifié aux exigences de RSS-139-1 pour les appareils de l'étalement de spectre 2,4 GHz.

### **Déclaration de conformité pour l'Europe**

Déclaration de conformité en ce qui concerne les directives R&TTE 1999/5/EC et EMC 89/336/ EEC.

### **Informations sur le laser**

La gamme unitech PA500 est certifiée aux États-Unis comme étant conforme aux exigences de DHHS/CDRH 21CFR sous-chapitre J et aux exigences de IEC 825-1. Les produits de classe II et de classe 2 ne sont pas considéré comme dangereux. La gamme PA500 contient en interne une diode à laser visible (VLD) dont les émissions n'excèdent pas les limites maximales définies dans les réglementations ci-dessous. Le scanner est conçu pour qu'il n'y ait pas d'accès humain à une lumière laser nuisible pendant l'utilisation normale, l'entretien par l'utilisateur ou les opérations de service prescrites. L'étiquette d'avertissement de sécurité du laser exigée par DHHS/IEC pour le module scanner laser en option de la gamme PA500 est située sur le couvercle du compartiment de la mémoire, sur l'arrière de l'unité.

**ATTENTION** – L'utilisation de contrôles, d'ajustements ou des procédures autres que ceux décrits dans ce document peut résulter en une lumière laser dangereuse. L'utilisation d'instruments optiques avec le scanner augmentera le danger pour les yeux. Les instruments optiques comprennent les jumelles, les microscopes et les loupes. Ceci ne comprend pas les lunettes portées par l'utilisateur.

# 符合性声明

## **FCC 声明**

该款产品符合《FCC 规则》第 15 部分 B 级产品规定。在家用环境下，该产品可能造成无线电干扰，用户应采取有效的防范措施。

## **加拿大符合性声明**

该款产品属于 B 级数字设备，符合《加拿大干扰性设备规范》的所有要求。兹证明该产品符合 RSS-139-1 标准中对 2.4GHz 扩频规定的各项要求。

## **欧洲符合性声明**

根据 R&TTE 1999/5/EC 与 EMC 89/336/ EEC 指令，特此声明该款产品符合相关要求。

## **激光信息**

unitech PA500 系列产品，已在美国认证，符合《DHHS/CDRH 21CFR 准则》中“J 节”所规定的各项要求，同时符合 IEC 825-1 标准所规定的各项要求。据认证，II 级与 2 级产品不存在危险。PA500 系列产品内置可视激光二极管（VLD），其辐射不超过前述规定的最大限值。扫描器设计合理，正常操作、用户维护或在规定的维修操作期间，有害激光不会对人造成影响或损害。根据 DHHS/IEC 准则或标准规定，PA500 系列产品可选激光扫描器模组所要求的激光安全警告标签加贴于内存盒外盖上。详见机身背面。

**注意：**如果采用本指南规定之外的控制器或操作步骤或不依此处指示而进行调整，则可能会产生有害激光。如果在使用扫描器的同时使用光学仪器，则会对眼睛造成更大的影响或损害。所谓的光学仪器包括双筒望远镜、显微镜与放大镜，不包括使用者所配戴的眼镜。

### 認證聲明

#### **歐洲符合性聲明**

該款產品符合《FCC 規則》第 15 部分所規定的 B 級產品。在家用環境下，該產品可能造成無線電干擾。若此，用戶則應採取相應的防範措施。

#### **加拿大符合性聲明**

該款產品屬於 B 級數位設備，符合《加拿大干擾性設備規範》的所有要求。  
茲證明該產品符合 RSS-139-1 標準中對 2.4 GHz 擴頻設備所規定的各項要求。

#### **歐洲符合性聲明**

根據 R&TTE 1999/5/EC 與 EMC 89/336/ EEC 指令，特此聲明該款產品符合相關要求。

#### **鐳射資訊**

unitech PA500 系列產品，經在美國認證，符合《DHHS/CDRH 21CFR 準則》中“J 節”所規定的各項要求，同時符合 IEC 825-1 標準所規定的各項要求。據認為，II 級與 2 級產品存在危險。PA500 系列產品內建可視鐳射二極體（VLD），其輻射不超過前述規範所規定的最大限值。掃描器設計合理，正常操作、用戶維護或在規定的維修操作期間，有害鐳射不會對人造成影響或損害。根據 DHHS/IEC 準則或標準規定，PA500 系列產品可選鐳射掃描器模組所要求的鐳射安全警告標籤加貼於記憶體盒外蓋上。詳見機身背面。

注釋：如果採用本指南規定之外的控制器或操作步驟或不依此處指示而進行調整，則可能會形成有害鐳射。如果在使用掃描器的同時使用光學儀器，則會對眼睛造成更大的影響或損害。所謂的光學儀器包括雙筒望遠鏡、顯微鏡與放大鏡，其中不包括使用者所戴用的眼鏡。

## 各規格との適合

### 連邦通信委員会声明

これは連邦通信委員会 第 15、クラス B 製品である。国内環境において、この製品は無線妨害を引き起こす可能'があり、その場合使用者は適切な対策の実施が必要になる可能'がある。

### カナダの準拠声明

本クラス B デジタル装置はカナダの環境規制に関するすべての必要条件を満たしている。  
本機は 2.4 ギガヘルツスペクトルデバイスとして、RSS-139-1 の要件に公認される。

### 欧州統一声明

EC R&TTE 1999/5 および 89/336/EEC 指示に関する統一宣言。

### レーザー情報

unitech PA500 シリーズは、米国内において DHHS/CDRH21CFR J 節の要件、および IEC825-1 の要件を満たすと公認されています。クラス II とクラス 2 の製品が危険であるとは考えられていません。PA500 シリーズは製品内部に、放出が上記規則で説明される最大限度を超えない範囲の可視レーザーダイオード (VLD) を含んでいます。スキャナは、通常操作やメンテナンス等において、有害レーザーが人体に触れないよう設計されています。PA500 シリーズの光学レーザーสキャナーに対する、DHHS/IEC によるレーザー安全警戒基準は、本体後部のメモリー部カバーに記載されています。

**警告：**使用者がここに示す以外の操作・使用法を行った場合、有害なレーザー光線被害をもたらす可能'があります。スキャナに光学機器を使用すると目に対する危険を増加させます。ここでいう光学機器とは、双眼鏡、顕微鏡、および拡大鏡等を言います。使用者が着用しているメガネは含みません。